

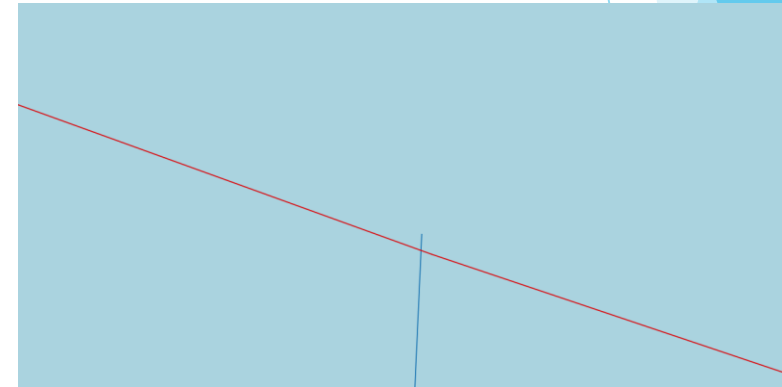
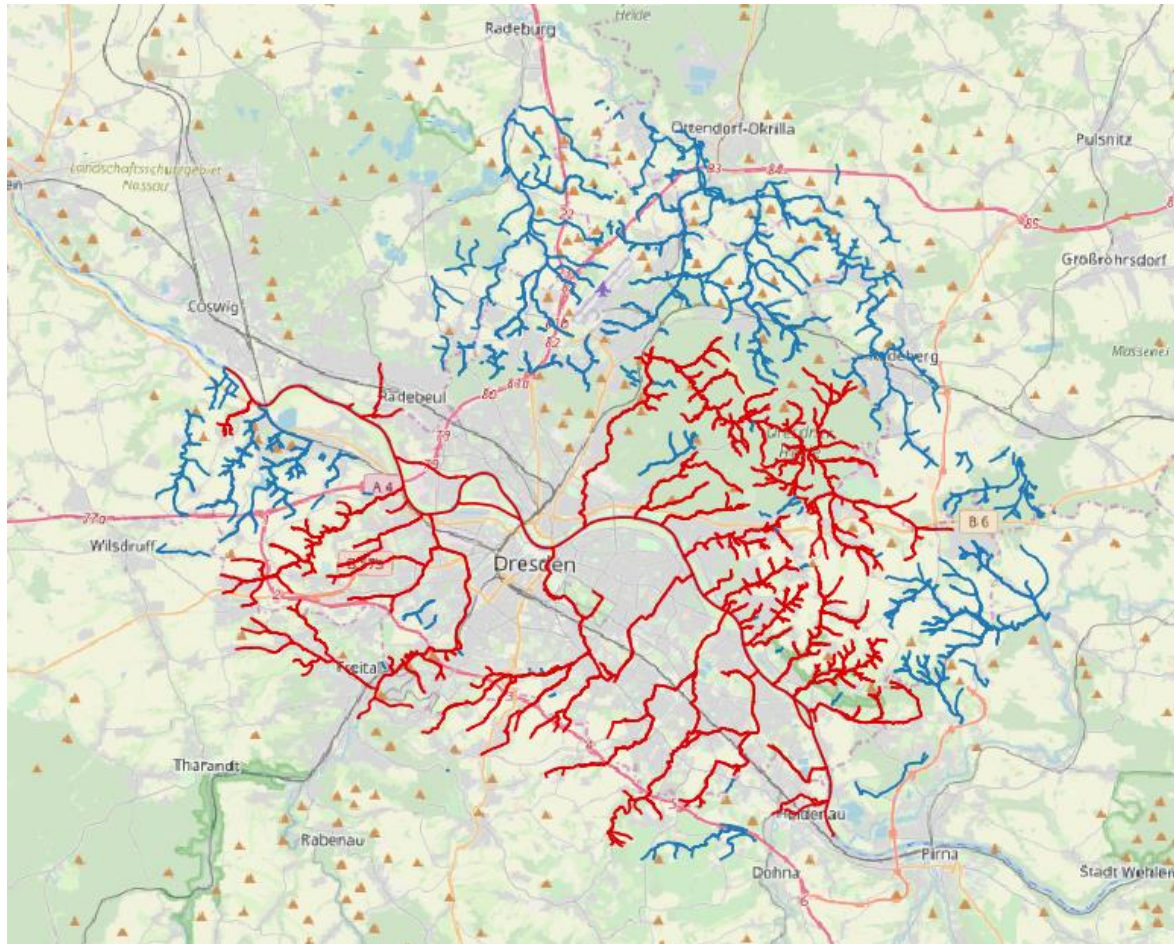
Erweiterung eines QGIS Plugins für Gewässernetzanalysen



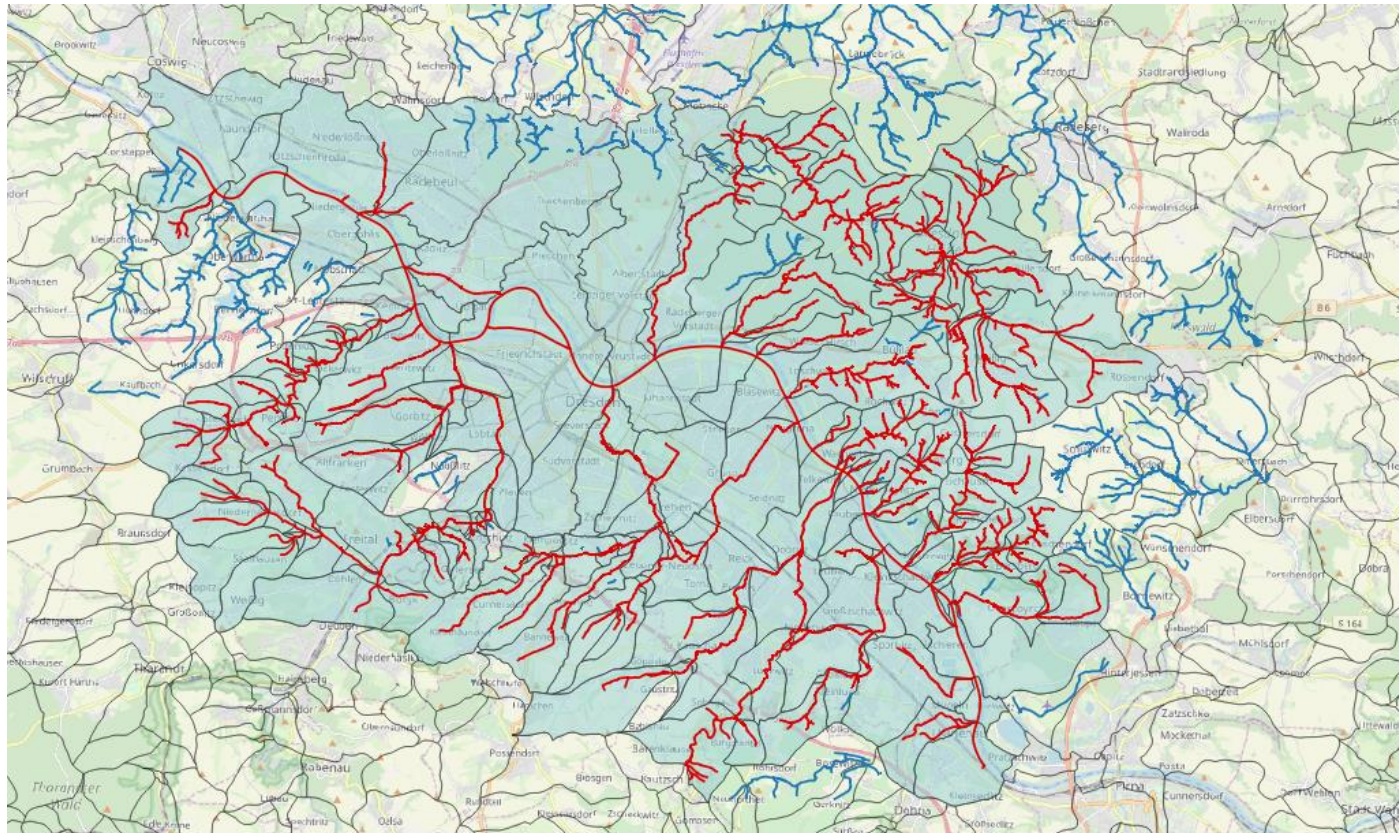
Water Net Analyzer

- ⚙ 1 Water Network Constructor
- ⚙ 2 Flow path upstream/downstream
- ⚙ 3 Calculate along Flow Path

Berechnung von Einzugsgebieten oberhalb eines frei wählbaren Ortes



Berechnung von Einzugsgebieten oberhalb freiwählbarer Punkte



Count: 219

Unique values: 219

NULL (missing) values: 0

Minimum value: 1375.6126144

Maximum value: 13737226.5034

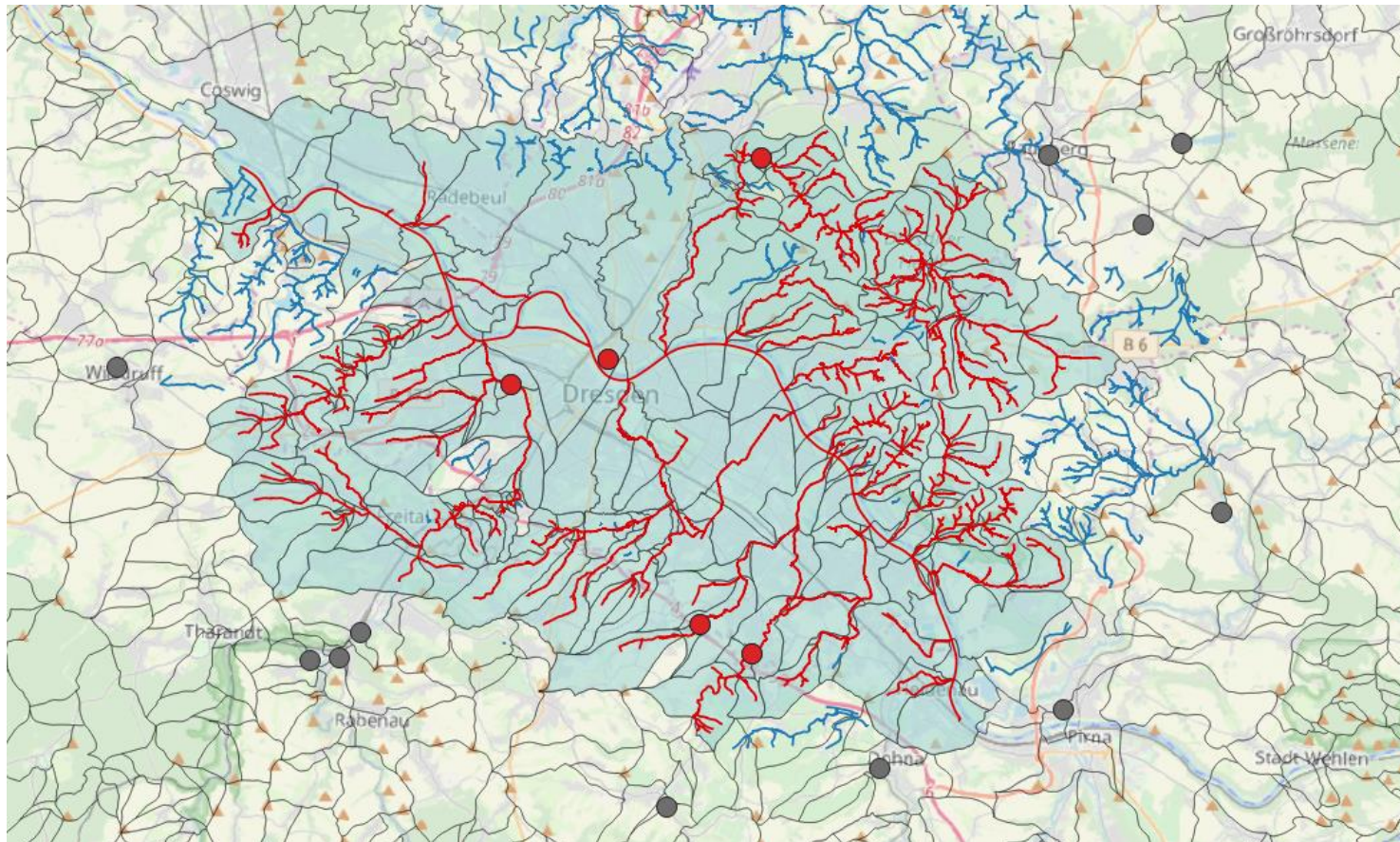
Range: 13735850.8907856

Sum: 341616691.0893132

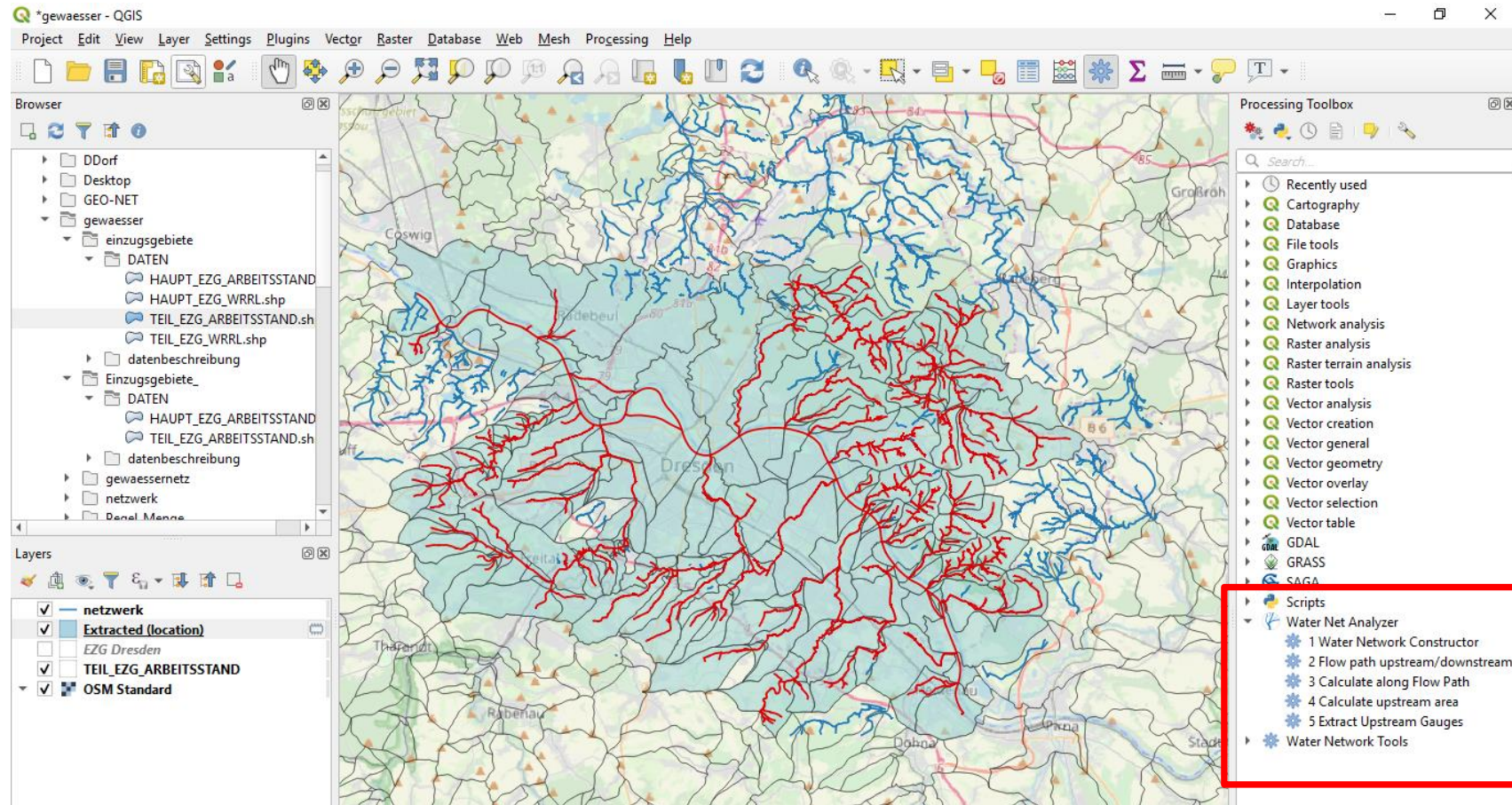
Mean value: 1559893.5666178686

Median value: 866657.383341

Berechnung von Stationen/Pegel oberhalb eines frei wählbaren Punktes



Erweiterung QGIS Toolbox „Water Net Analyzer“



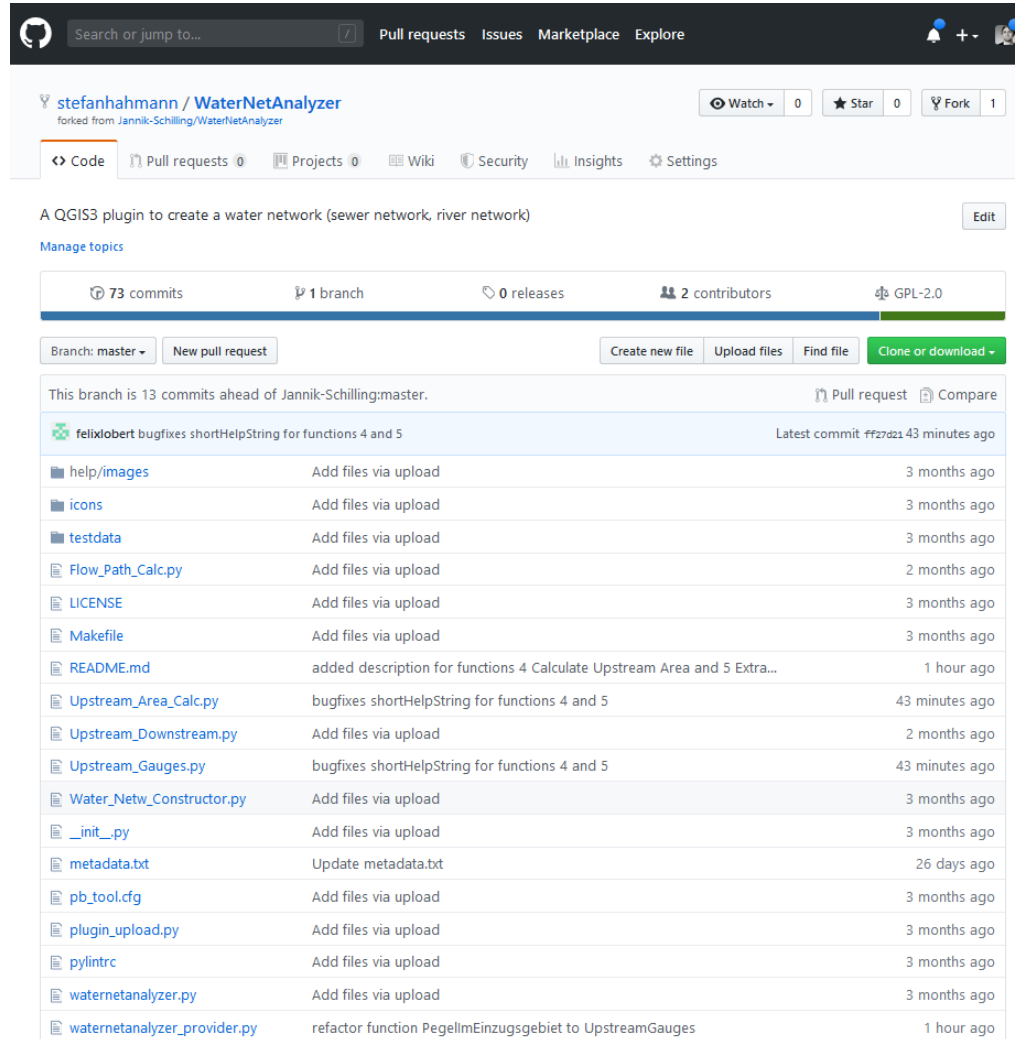
QGIS Plugin - Water Net Analyzer 2.0 ☺



Water Net Analyzer

- ⚙ 1 Water Network Constructor
- ⚙ 2 Flow path upstream/downstream
- ⚙ 3 Calculate along Flow Path
- ⚙ 4 Calculate upstream area
- ⚙ 5 Extract Upstream Gauges

<https://github.com/stefanhahmann/WaterNetAnalyzer>



stefanhahmann / WaterNetAnalyzer
forked from Jannik-Schilling/WaterNetAnalyzer

Watch 0 Star 0 Fork 1

Code Pull requests 0 Projects 0 Wiki Security Insights Settings

A QGIS3 plugin to create a water network (sewer network, river network) [Edit](#)

Manage topics

73 commits 1 branch 0 releases 2 contributors GPL-2.0

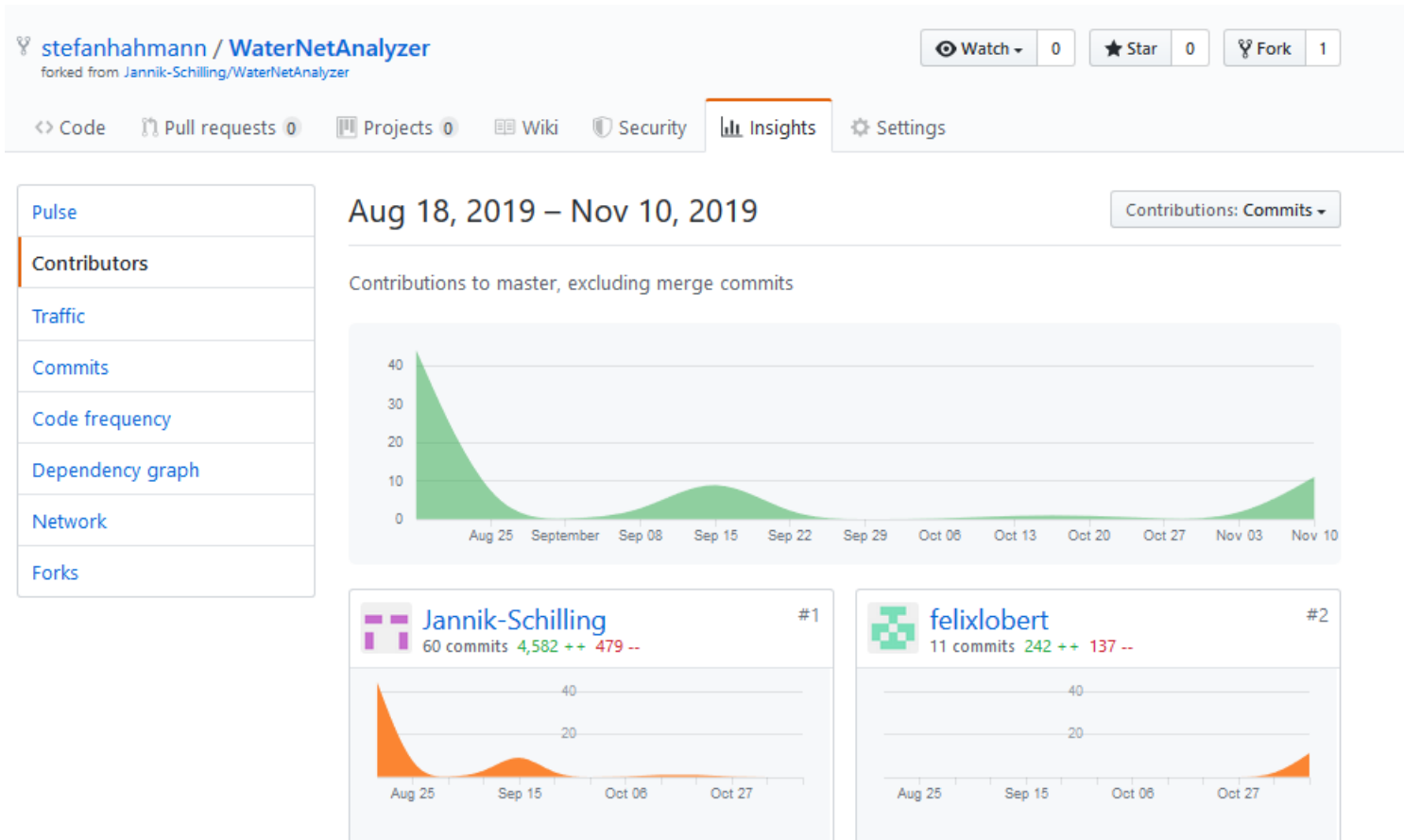
Branch: master New pull request Create new file Upload files Find file Clone or download

This branch is 13 commits ahead of Jannik-Schilling:master. [Pull request](#) [Compare](#)

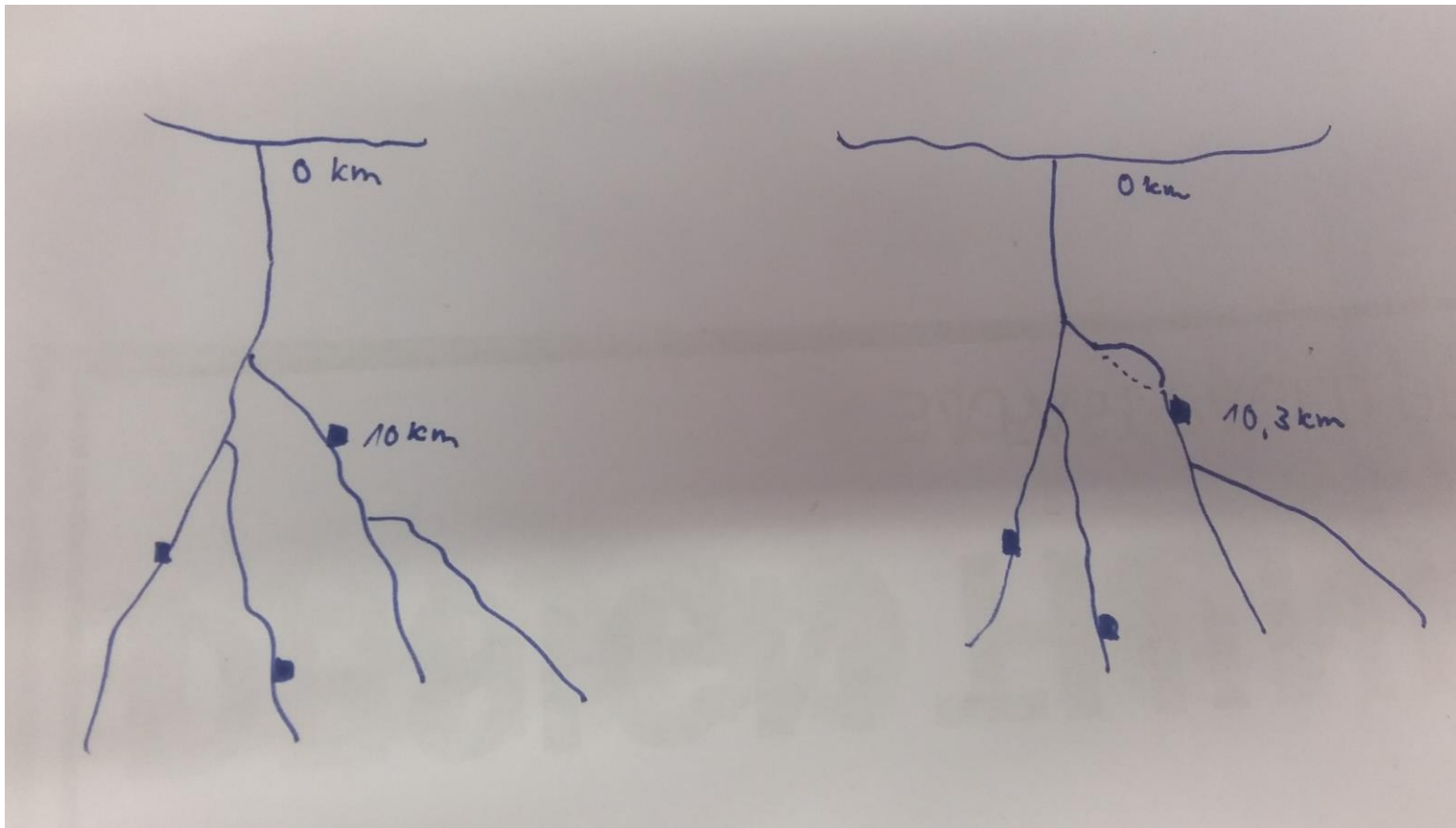
[felixlobert](#) bugfixes shortHelpString for functions 4 and 5 Latest commit ff27d21 43 minutes ago

help/images	Add files via upload	3 months ago
icons	Add files via upload	3 months ago
testdata	Add files via upload	3 months ago
Flow_Path_Calc.py	Add files via upload	2 months ago
LICENSE	Add files via upload	3 months ago
Makefile	Add files via upload	3 months ago
README.md	added description for functions 4 Calculate Upstream Area and 5 Extra...	1 hour ago
Upstream_Area_Calc.py	bugfixes shortHelpString for functions 4 and 5	43 minutes ago
Upstream_Downstream.py	Add files via upload	2 months ago
Upstream_Gauges.py	bugfixes shortHelpString for functions 4 and 5	43 minutes ago
Water_Netw_Constructor.py	Add files via upload	3 months ago
__init__.py	Add files via upload	3 months ago
metadata.txt	Update metadata.txt	26 days ago
pb_tool.cfg	Add files via upload	3 months ago
plugin_upload.py	Add files via upload	3 months ago
pylintrc	Add files via upload	3 months ago
waternetanalyzer.py	Add files via upload	3 months ago
waternetanalyzer_provider.py	refactor function PegellmEinzugsgebiet to UpstreamGauges	1 hour ago

Code auf Github.com



Aktualisierung der Flusskilometrierung bei Änderungen am Flussverlauf



Konzept zur Umsetzung

The background of the slide features abstract, overlapping geometric shapes in various shades of blue, ranging from light sky blue to deep navy blue. These shapes are primarily located on the left and right sides, framing the central white area where the text is placed. The shapes include triangles and polygons of different sizes and orientations, creating a modern, architectural feel.