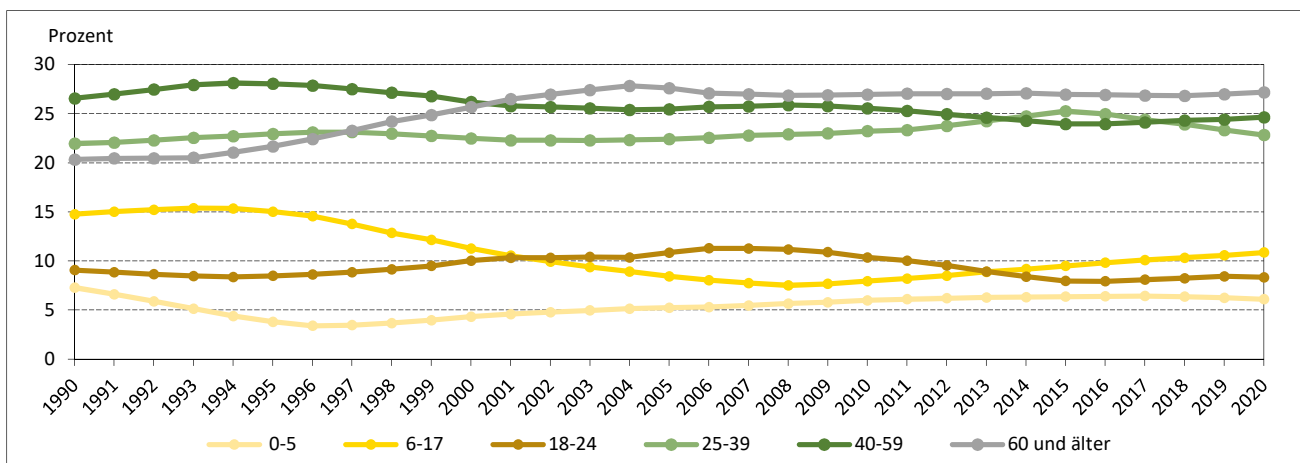


Bevölkerungsbestand

Tab. 6: Bevölkerung am Ort der Hauptwohnung nach Geschlecht und 5 Altersgruppen 1990 bis 2020

| Jahr | insgesamt | | davon im Alter von ... bis ... Jahren | | | | | | | | | |
|------|-----------|-------------------|---------------------------------------|-------------------|-----------|-------------------|-----------|-------------------|-----------|-------------------|--------------|-------------------|
| | | | 0-17 | | 18-24 | | 25-39 | | 40-59 | | 60 und älter | |
| | | darunter weiblich | insgesamt | darunter weiblich | insgesamt | darunter weiblich | insgesamt | darunter weiblich | insgesamt | darunter weiblich | insgesamt | darunter weiblich |
| 1990 | 489.366 | 261.063 | 107.941 | 52.387 | 44.388 | 21.993 | 107.461 | 53.785 | 130.039 | 66.805 | 99.537 | 66.093 |
| 1991 | 484.407 | 257.489 | 104.806 | 50.959 | 42.932 | 20.867 | 106.850 | 53.187 | 130.730 | 67.285 | 99.089 | 65.191 |
| 1992 | 481.588 | 254.620 | 101.715 | 49.427 | 41.631 | 19.998 | 107.386 | 52.851 | 132.284 | 68.001 | 98.572 | 64.343 |
| 1993 | 478.623 | 251.893 | 98.212 | 47.716 | 40.508 | 19.382 | 108.006 | 52.510 | 133.675 | 68.610 | 98.222 | 63.675 |
| 1994 | 470.681 | 246.465 | 92.891 | 45.222 | 39.400 | 18.749 | 106.912 | 51.194 | 132.384 | 67.776 | 99.094 | 63.524 |
| 1995 | 464.688 | 242.067 | 87.509 | 42.671 | 39.433 | 18.718 | 106.672 | 50.322 | 130.368 | 66.537 | 100.706 | 63.819 |
| 1996 | 456.102 | 237.418 | 81.900 | 39.872 | 39.343 | 18.830 | 105.456 | 49.487 | 127.148 | 65.001 | 102.255 | 64.228 |
| 1997 | 453.710 | 236.050 | 78.199 | 38.107 | 40.144 | 19.192 | 104.960 | 49.131 | 124.847 | 63.901 | 105.560 | 65.719 |
| 1998 | 446.730 | 232.832 | 73.858 | 35.931 | 40.913 | 19.894 | 102.596 | 48.114 | 121.243 | 62.105 | 108.120 | 66.788 |
| 1999 | 471.133 | 245.080 | 75.885 | 37.005 | 44.734 | 21.912 | 107.104 | 50.263 | 126.267 | 64.403 | 117.143 | 71.497 |
| 2000 | 472.350 | 245.623 | 73.651 | 35.855 | 47.427 | 23.485 | 106.254 | 49.888 | 123.730 | 63.120 | 121.288 | 73.275 |
| 2001 | 472.921 | 245.770 | 71.493 | 34.722 | 48.786 | 24.380 | 105.433 | 49.439 | 121.962 | 62.140 | 125.247 | 75.089 |
| 2002 | 474.730 | 246.298 | 69.882 | 34.032 | 49.064 | 24.552 | 105.890 | 49.567 | 121.942 | 61.937 | 127.952 | 76.210 |
| 2003 | 477.653 | 247.448 | 68.466 | 33.457 | 49.705 | 24.765 | 106.444 | 49.987 | 122.103 | 61.754 | 130.935 | 77.483 |
| 2004 | 480.347 | 248.428 | 67.577 | 33.081 | 49.715 | 24.750 | 107.245 | 50.278 | 122.028 | 61.685 | 133.782 | 78.634 |
| 2005 | 487.199 | 251.347 | 66.582 | 32.570 | 52.838 | 26.296 | 109.196 | 51.132 | 124.031 | 62.522 | 134.552 | 78.827 |
| 2006 | 496.021 | 255.479 | 66.146 | 32.382 | 56.008 | 28.046 | 111.918 | 52.596 | 127.513 | 63.927 | 134.436 | 78.528 |
| 2007 | 501.915 | 258.195 | 66.249 | 32.425 | 56.524 | 28.482 | 114.392 | 53.920 | 129.241 | 64.533 | 135.509 | 78.835 |
| 2008 | 506.628 | 260.133 | 66.701 | 32.676 | 56.634 | 28.502 | 116.010 | 54.837 | 131.191 | 65.245 | 136.092 | 78.873 |
| 2009 | 511.138 | 262.024 | 68.744 | 33.563 | 55.671 | 28.152 | 117.530 | 55.603 | 131.767 | 65.349 | 137.426 | 79.357 |
| 2010 | 517.168 | 264.429 | 71.964 | 35.195 | 53.516 | 27.016 | 120.115 | 56.852 | 132.150 | 65.113 | 139.423 | 80.253 |
| 2011 | 523.807 | 266.797 | 74.868 | 36.556 | 52.524 | 26.099 | 122.238 | 57.809 | 132.547 | 64.971 | 141.630 | 81.362 |
| 2012 | 530.722 | 269.482 | 78.050 | 38.096 | 50.599 | 24.916 | 126.182 | 59.701 | 132.452 | 64.598 | 143.439 | 82.171 |
| 2013 | 535.810 | 271.464 | 81.264 | 39.613 | 47.822 | 23.403 | 129.962 | 61.556 | 131.860 | 64.008 | 144.902 | 82.884 |
| 2014 | 541.304 | 273.526 | 83.814 | 40.884 | 45.421 | 22.089 | 133.931 | 63.178 | 131.488 | 63.660 | 146.650 | 83.715 |
| 2015 | 548.800 | 275.744 | 87.004 | 42.310 | 43.715 | 20.865 | 138.609 | 64.902 | 131.554 | 63.461 | 147.918 | 84.206 |
| 2016 | 553.036 | 277.272 | 89.702 | 43.550 | 43.833 | 20.683 | 138.068 | 64.683 | 132.515 | 63.713 | 148.918 | 84.643 |
| 2017 | 557.098 | 279.040 | 92.039 | 44.829 | 45.049 | 21.189 | 135.951 | 63.559 | 134.442 | 64.540 | 149.617 | 84.923 |
| 2018 | 560.641 | 280.395 | 93.567 | 45.555 | 46.191 | 21.789 | 134.115 | 62.360 | 136.391 | 65.427 | 150.377 | 85.264 |
| 2019 | 563.011 | 281.704 | 94.736 | 46.153 | 47.477 | 22.535 | 131.422 | 61.154 | 137.460 | 65.850 | 151.916 | 86.012 |
| 2020 | 561.942 | 281.485 | 95.380 | 46.531 | 46.904 | 22.549 | 128.323 | 59.587 | 138.511 | 66.415 | 152.824 | 86.403 |

Abb. 6: Bevölkerung nach 6 Altersgruppen 1990 bis 2020



Quellen: Melderegister der LH Dresden, Kommunale Statistikstelle