



Dresden.
Dresden

Dresden Waste Guidebook

English

Imprint

Publisher:
City of Dresden

Urban Green and Waste Management Office
telephone (03 51) 4 88 96 33
fax (03 51) 4 88 96 03
email abfallwirtschaft@dresden.de

Press, Public Relations and Protocols Office
telephone (03 51) 4 88 23 90
fax (03 51) 4 88 22 38
email presse@dresden.de

Post office box 12 00 20
01001 Dresden
www.dresden.de
facebook.com/stadt.dresden

Central administration number 115 – we love questions

Images/graphics: Urban Green and Waste Management
Office, Stadtreinigung Dresden GmbH, Sächsische Bildungs-
gesellschaft für Umweltschutz und Chemieberufe Dresden
mbH

März 2023

Electronic documents with a qualified electronic signature can
be submitted using a form. Furthermore, it is possible to en-
crypt emails to the City of Dresden with an S/MIME certificate
or to send secure emails with De-Mail. Further information
can be found at www.dresden.de/kontakt.

This information material is part of the public relations work
of the City of Dresden. It may not be used for election adver-
tising. However, parties may use it to inform their members.

Contents

Waste reduction and reusable materials	4
Second-hand goods	6
Information and advice	7
Environmental education courses	8
Organic waste	9
Green waste	10
Christmas tree collection points	11
Paper and cardboard	12
Glass packaging	13
Light-weight packaging	14
Plastic waste	15
Hazardous substances	16
Disposable and rechargeable batteries	17
Hazardous waste vehicle	18
Old electrical appliances	20
Bulky waste and waste wood	21
Mixed municipal waste	22
Construction waste	23
Notes on disposal	24
Disposal in winter	26
Recycling depots	27
Other collection points	29
Street cleaning	30
Urban cleanliness	31

Waste reduction and reusable materials



Waste reduction and reusable materials

If you generate as little waste as possible and properly separate what you do produce, you will preserve resources and protect the environment. This also helps to reduce waste charges.

Longer and more efficient use

It makes sense to use what you have acquired for as long as possible. Therefore, when purchasing new products, make sure that the products are durable and can be repaired. You can also buy well-kept second-hand goods – such as clothes, bicycles, toys, electrical appliances, furniture or prams – in second-hand shops, via online classified ads or in newspapers and at flea markets. You can also sell items you no longer need, or donate them to social institutions (→ page 6).

Borrowing

Things you rarely use, you can rent instead of buying. There are numerous rental options for cars, bicycles, festive costumes, as well as garden and construction equipment. For books, films and music there are book, video and media libraries at your disposal.

Use reusable products

You can save a lot of packaging waste and disposable items if you use reusable products, for example:

- reusable cups and bottles for hot and cold drinks
- lunch boxes, food storage bins and containers
- rechargeable batteries
- reusable drinking straws made of plastic, glass or stainless steel
- reusable dishes and cutlery made of porcelain, plastic, melamine or aluminium
- muffin and cake baking tins made of stainless steel, ceramic, glass or silicone
- reusable ice trays

Take-away drinks and meals

In Dresden, about ten million disposable cups are used each year. They overflow from public dustbins and litter the streets and green spaces. Therefore, it is recommendable to drink from your own reusable cup for hot or cold drinks. They can be used as often as desired, keep the drink warm or cold for longer and are more leak-proof. More and more shops are filling drinks in reusable cups and sometimes they even give discounts.

Also when you buy take-away food, there is a lot of packaging waste. The containers for fast food, pizza, soup, salad, sushi, etc., are thrown away shortly afterwards. Upon request, however, many suppliers will also put their food into reusable containers you bring with you. For longer transport distances, containers with an insulating function are suitable for keeping food warm or cold. For people who like to eat on the move, the purchase of light reusable cutlery is worthwhile.

- reusable and washable bags

Conscious shopping

Plan your shopping in advance so that you buy only as much as you really need and can consume. With bulk unpackaged goods, you can choose the quantity you require yourself. Fruit and vegetables are better stored in a washable, reusable freshness net than in a plastic bag. At sausage, meat and cheese counters, some sellers also allow the fresh goods to be packed in a reusable box you bring with you. You should avoid food that is packaged in mini or single portions. Buying coffee cream or sugar in larger packages avoids a lot of waste. You should also avoid goods with unnecessary additional packaging, such as tea or toothpaste, and disposable products, such as disposable razors or plastic straws. Opt for reusable bottles for drinks, refills for soaps and detergents, and recycled products made of cellulose. More and more plastic bottles and packaging are made of recycled plastic. Use reusable containers such as baskets, shopping boxes, cloth bags or reusable tote bags to transport your purchases. It is always worth carrying a bag in your pocket or purse or car boot for spontaneous purchases.

It also makes sense to buy regional products in supermarkets or at weekly markets. Due to shorter transport routes, a lot of secondary packaging is no longer necessary. You can reduce packaging even more in packaging-free shops, where you can fill the goods loosely into reusable containers you bring along.

Avoid food waste

In Germany, a great amount of food is thrown away, often because too much was bought and things were poorly stored. New goods should be placed behind older ones when unpacking. This makes it easy to see what needs to be consumed first. Opened food should be well covered and the content of canned goods should be transferred into sealable containers and placed in the refrigerator. These have different cold zones for optimal storage. Home-cooked food is placed right at the top, cheese and dairy products in the middle, perishables such as meat and fish on the lower glass plate, fruit and vegetables that can tolerate cold go in the vegetable compartment, while eggs, butter and drinks are placed in the door. You can boil, pickle or freeze any leftover food or in case you have bought too much. Make a note of the date of manufacture.

Waste reduction in the office

Opt for electronic communication and filing to save paper. If printing is required, double-sided printing on recycled paper is recommended. The reverse side of rough paper can be used as note paper. Pens, pencils, fountain pens, highlighters or correction pens can be refilled. Instead of stapling, paper clips or stapleless staplers are recommended. Transparent sleeves and file fasteners can be used multiple times. A „No advertising“ sticker on your letterbox helps to reduce the number of advertising brochures.

Second-hand goods



Information and advice

This includes

- furniture such as sofas, armchairs, tables, chairs, cupboards, beds, shelves, dressers
- household items such as dishes, cutlery, drinking glasses, pots, bowls, baking tins, laundry stands, pictures, tools, clocks and watches
- electrical appliances such as refrigerators and freezers, electric cookers, microwaves, coffee machines, mixers, washing machines, irons, vacuum cleaners, lamps, telephones, radios, televisions, cameras, computers, tablets, game consoles
- bicycles, prams, sledges, skis, toys, books, jewellery
- clothing, textiles, shoes

Using second-hand goods

Used goods that are no longer needed but are still in good condition do not have to be thrown away. There are various facilities where you can hand them in to be reused. Instead of buying new things, you can also repair, exchange, borrow or buy used goods.

Exchange and giveaway market

You can exchange or give away your well-kept used goods in the online exchange and giveaway market of the City of Dresden and also place wanted advertisements. You can find this free service at www.dresden.de/tauschen.

Donate used goods

Well-preserved furniture, large electrical appliances and other used goods are picked up free of charge by the Social Furniture Service after consultation with you, and passed on to those in need. For an appointment, please contact the Sächsische Umschulungs- und Fortbildungswerk Dresden e. V. (SUFW), which operates the Social Furniture Service with the support of the City of Dresden: Phone (0351) 8 94 10 20, email: moebel@sufw.de. You can also make your donation personally at the SUFW in Pieschen at Industriestrasse 17, Monday–Friday 8 a.m.–6 p.m.

The social department store of the SUFW, the consumer electronics second-hand shop ‚Zweiter Frühling‘, and the bicycle shop of Lebenshilfe Dresden, the ‚Zweite Chance‘ second-hand shop of the Salvation Army, the ‚Fair-Kauf‘ clothes shop of the German Red Cross, Grüne Liga Dresden’s for-free shop, as well as privately run buying and selling shops are also happy to receive well-kept second-hand goods.

Repair used goods

The RepairCafé offers everyone the opportunity to repair their electrical appliances themselves. Tools and professional support are provided on site if required. Please bring your own spare parts. The RepairCafé opens five times a month on a voluntary basis – once each in Johannstadt, Gorbitz, Pieschen, Löbtau and Gruna. The dates, addresses and information on the procedure can be found at repaircafe.fueralle.org.

Waste info hotline

The Urban Green and Waste Management Office advises you on waste management and city cleaning in the City of Dresden.

- waste info telephone: (03 51) 4 88 96 33
- commercial waste information telephone: (03 51) 4 88 96 44
- telephone service hours: Monday, Wednesday, Friday: 8 a.m.–12 p.m., Tuesday and Thursday: 8 a.m.–12 p.m. and 1–6 p.m.
- email: abfallberatung@dresden.de, gewerbeabfallberatung@dresden.de
- physical address: Urban Green and Waste Management Office, Grunaer Straße 2, 01069 Dresden
- visiting hours: Monday and Friday: 9 a.m.–12 p.m., Tuesday and Thursday: 9 a.m.–12 p.m. and 1–6 p.m.

Online

On the website www.dresden.de/abfall, you can find comprehensive information, all statutes and forms, as well as materials for download. You can find out how to reduce waste and how to separate waste correctly. All recycling bank sites, recycling depots, other waste collection points and mobile collection points are listed. There is also information on environmental education, urban cleanliness and street cleaning, including for businesses. At the municipal exchange and giveaway market,

you can exchange, give away or search for well-kept used goods free of charge. The website is available in both a browser and a smartphone version. On the themed city map at www.dresden.de/stadtplan/abfall, you will find recycling depots, waste collection points, recycling container sites, delivery points for mobile phones, reference points for rubbish sacks, mobile collection points for hazardous substances and Christmas trees, and suppliers of to-go drinks who accept customer-supplied reusable cups.

Online forms

- registration, re-registration and deregistration of waste containers
- collection of bulky waste
- collection of large old electrical appliances
- exemption for green waste collection
- declaration form for the free disposal of waste and leaves

Collection dates

At www.dresden.de/abfuhrkalender and in the themed city map at www.dresden.de/, you can find out which waste disposal company empties your waste bins and when, after entering your address. You can download the collection dates in PDF format or have them entered into your personal electronic calendar.

Environmental education courses



The state capital of Dresden is committed to raising children's and young people's awareness of the environment at an early age. If you learn from the start how to avoid waste and how to dispose of and separate it properly, you reduce the amount of waste and help to recycle or properly dispose of waste. This conserves resources and protects the environment. The Urban Green and Waste Management Office offers a wide range of environmental education courses in the field of waste management:

- for all educational institutions in the City of Dresden
- various offers for pre-school, primary school and from secondary level I
- free of charge
- reimbursement of travel costs
- individually adaptable
- also suitable for day-care and holiday arrangements

The Sächsische Bildungsgesellschaft für Umweltschutz und Chemieberufe Dresden mbH (SBG) was commissioned to carry out the environmental education courses.

These include

Classes

These are carried out in the registered facilities, as well as at SBG Dresden upon request and can be variably adapted. The minimum amount is two teaching units. There are various options for topics concerning waste management in Dresden, ecosystems and environmental technology, as well as sustainability and resource

conservation.

Field trips

Various waste management and processing plants in and around Dresden, such as a recycling depot or the fermentation plant for organic waste, can be visited within about three hours (including arrival and departure). Please note that no field trips can be offered during the summer holidays.

Day-long and week-long projects

The duration and content of the project days and weeks will be adapted to the needs of the registered institution. They are carried out within the educational institutions and can be supplemented by laboratory work and field trips.

Classes, field trips and project days or weeks can be booked individually or in combination. The offers vary according to the age of the participants and are sorted by preschool, primary school and from lower secondary level. A detailed list of the offers and the registration form can be found at www.dresden.de/umweltbildung and at www.sbg-dresden.de (News: Projects). Please send your registration directly to SBG Dresden, who will be happy to advise you about the offer:

telephone: (03 51) 44 4 57 03
(Wednesday till Friday
8 a.m.–12 p.m.)
email: upu@sbgdd.de



Organic waste

This includes

- waste from food preparation and leftovers (not bones)
- expired or spoiled foodstuffs (unpacked)
- household waste such as kitchen paper, serviettes, uncoated wrapping papers (no cellulose tissues)
- coffee grounds (with paper filters), tea (bags)
- green waste from house and garden such as withered flowers, potted plants (without pot), old potting soil, foliage, lawn clippings, pruned branches
- small animal and dog excrement in plant-based bedding such as sawdust and hay
- small quantities of edible fats and oils in absorbent kitchen paper

Disposal

- organic waste bin (mandatory bin) or self-recycling (composting)
- weekly emptying of the organic waste bin (regardless of fullness level)
- subject to charges (organic waste bin)

Own recycling of organic and green waste

You can properly compost and recycle any organic and green waste on your property yourself. In order to avoid over-fertilisation, there should be at least 25 square metres of usable/ cultivated land per person on the property.

An exemption from the collection of organic waste must be notified using the appropriate form at www.dresden.de/abfall.

Tips and advice

- Do not throw your organic waste into the organic waste bin in plastic bags or compostable bio-plastic bags made of cornstarch. They do not decompose during processing.
- The contents of incorrectly filled organic bins must be disposed of as mixed municipal waste. You will have to pay an additional fee for this.
- Mineral litter (such as cat litter) and hygiene articles (such as nappies and cellulose tissues) belong in the mixed municipal waste (→ page 22).
- Wrap damp waste in kitchen paper or newspaper and cover the bottom of the container with newspaper or crumpled paper. This reduces odours and the freezing of organic waste in winter.
- The owner of the property is responsible for cleaning the waste containers.
- Food scraps, oils and fats do not belong in the toilet.
- You can reduce waste by buying food in the quantities you need and storing it carefully.
- For tips on proper composting, please visit www.dresden.de/abfallinfo.

Green waste



This includes

- pruning from trees and hedges, lawn clippings, hay, straw, leaves, fallen fruit, flowers, plants, weeds, potting soil
- Christmas trees
- branches, trunks and roots up to one metre in length and 20 centimetres in diameter

and horse chestnuts with miner moth infestation free of charge at the recycling depots and green waste collection points. Caretaker services and commercial service providers cannot use this service.

Christmas trees

You can dispose of your Christmas tree, without decorations or packaging such as plastic bags, at the beginning of January free of charge at the locations provided (→ page 11) and at recycling depots and green waste collection points (→ page 28 f.). In some areas, disposal vehicles are also available (→ table below). The acceptance period will be announced online at www.dresden.de/abfall. There you will find a list of all collection points, including mobile collection points – also marked on the themed map of the city at www.dresden.de/stadtplan/abfall.

In Mobschatz and Gompitz, the administrative offices organise Christmas tree collection independently.

After the end of the municipal Christmas tree collection, you can dispose of your Christmas tree at the recycling depots and green waste collection points (→ page 28 f.) for a fee as green waste.

Roadside leaves

You can dispose of the leaves of street trees

locality	pick-up points for Christmas tree disposal vehicles	parking appointment times
Langebrück	Dörnichtweg (former post office)	10 a.m.–12 p.m.
Schönfeld-Weißig	Pappritz, Schulstraße (parking lot)	8 a.m.–10 p.m.
	Bautzner Landstraße (Gasthof Weißig parking lot)	10 a.m.–12 p.m.
Weixdorf	Platz des Friedens	8 a.m.–10 p.m.

Christmas tree collection points

Acceptance period at www.dresden.de/abfall

Altfranken	Forsythienstr./Schlehenstr.	Bischofsweg/Kamenzer Str.
Otto-Harzer-Str./Kastanienweg	Freiheit/Briesnitzer Höhe	Königsbrücker Platz (near electrical station)
Altstadt	Gottfried-Keller-Platz	Ritterstr./Sarrasanstr.
Berliner Str./Vorwerkstr.	Harthaer Str./Sanddornstr.	Pieschen
Blumenstr./Arnoldstr.	Kölner Str./Altnaußlitz	Aachener Str./Kopernikusstr.
Bönischplatz	Leutowitzer Ring/ Hetzdorfer Str. (north)	Aachener Str./Schützenhofstr.
Holbeinstr. (near Permoserstr.)	Lise-Meitner-Str./Maulbeerenstr.	Grimmaische Str./Trachenberger Str.
Hopfgartenstr./Gerokstr.	Naußlitzer Str./Grenzallee	Lommatzcher Str. (level No. 55)
Lindengasse (car park)	Neunimptscher Str./ Pohrsdorfer Weg	Osterbergstr./Markusplatz
Marschnerstr./Dinglingerstr.	Omsewitzer Ring/Kirschenstr.	Pestalozziplatz
Seidnitzer Str./Blochmannstr.	Steinbacher Str./Arthur-Weineck-Str.	Scharfenberger Str./Klingerstr.
Sternplatz	Wilsdruffer Ring/ Ebereschenstr. (south)	Trachenberger Platz
Wettiner Platz	Wölfnitzer Ring/Limbacher Weg	Plauen
Ziegelstr./Rietschelstr.	Klotzsche	Altenzeller Str./Leubnitzer Str.
Blasewitz	Alexander-Herzen-Str./ Theodor-Fontane-Str.	Chemnitz Str./Bayreuther Str.
Comeniusstr./Henze Str.	Grüner Weg (level No. 19)	Heinrich-Greif-Str. (car park)
Falkensteinplatz	Kiefernweg/Birkenweg	Karlsruher Str./Achtbeetweg
Franz-Mehring-Str./ Neudobritzer Weg	Klotzcher Weg/Hirtenweg	Ludwig-Renn-Allee (near department store)
Geisingstr./Schandauer Str.	Lubminer Str. (turning area)	Muldaer Str./Kohlenstr.
Gohrischstr./Winterbergstr.	Selliner Str./Zinnowitzer Str.	Nöthnitzer Str./Westendstr.
Hellendorfer Str./Marienberger Str.	Leuben	Plauenscher Ring/Hohe Str.
Hüblerplatz	Berchtesgadener Str./ Reichenhaller Str.	Schnorrstr./Hochschulstr.
Königsheimplatz (near taxi rank)	Goetzplatz	Thormeyerstr./Donndorfstr.
Lauensteiner Str./Kipsdorfer Str.	Jessener Str. (car park)	Prohlis
Liebstädter Str. (near hardware store)	Kyawstr./Berthold-Haupt-Str.	Altstrehlen/Kreischaer Str.
Löwenhainer Str. (near department store)	Melli-Beese-Str. (south No. 12 a)	Am Plan
Mosenstr. (near Haydnstr.)	Rathener Str./ Schönaer Str. (garages)	Gamigstr./Georg-Palitzsch-Str.
Niederwaldplatz	Tauernstr./Villacher Str.	Gamigstr./Trattendorfer Str.
Paulusplatz	Zamenhofstr./Robert-Berndt-Str.	Joseph-Keilberth-Str./ Alter Postweg
Rennplatzstr. (near Rauensteinstr.)	Loschwitz	Karl-Laux-Str./Fritz-Busch-Str.
Rothermundtstr./Rosenbergstr.	Bautzner Landstr./Rossendorfer Str.	Kauschaer Str. (opposite No. 10)
Toeplerstr./Marienberger Str.	Ludwig-Küntzelmann-Platz	Keplerstr. (level No. 27)
Cossebaude	Pillnitzer Landstr. (near Calberlastr.)	Lugaer Str./Poetenweg
An den Winkelwiesen/Erna-Berger-Str.	Pillnitzer Landstr./ Leonardo-da-Vinci-Str.	Otto-Dix-Ring/Heinz-Lohmar-Weg
Eichbergstr. (car park)	Neustadt	Prohliser Allee/Georg-Palitzsch-Str.
Grüner Weg (opposite No. 20)	Am Jägerpark	Robert-Sterl-Str./Spitzwegstr.
Cotta		Senftenberger Str./Spremberger Str.
Bonhoefferplatz		Walter-Arnold-Str. (level No. 8)
Braunsdorfer Str./Am Gorbitzbach		Wilhelm-Busch-Str./Gostritzer Str.
Conertplatz		
Flensburger Str. (opposite No. 10)		

These places without consolidated containers are marked with a sign.

Paper and cardboard



Glass packaging

This includes

- newspapers, magazines, brochures, books
- writing, drawing and photocopy paper
- crumpled, packaging and gift wrap paper
- shredded cardboard and cartons

Disposal

- blue bin (for paper and cardboard) – emptied generally every two weeks
- recycling containers for cardboard/waste paper or newspapers/magazines – emptied as required (at least 1 x per week)
- without an extra fee
- companies of your choice can take over document shredding as a chargeable service

Blue bin

For convenient disposal of paper and cardboard, use the municipal blue bin at your house. It is free of charge, can be used as part of full service (→ page 24) and proceeds from the marketing of the content flow into the waste fee budget. If you do not have a municipal blue bin, ask your landlord to order one from the municipality (→ page 7).

Recycling container

Paper and cardboard are collected at the recycling bank sites in separate containers. The

sites can be found online at www.dresden.de/abfall and www.dresden.de/stadtplan/abfall. Please note that only about half of all recycling bank sites are equipped with containers for paper and cardboard. It is not permitted to deposit waste paper at sites which have only glass containers. It cannot be collected when the glass containers are emptied.

Before throwing in cardboard and cartons, it is important to make them as flat or small as possible – by tearing, unfolding or standing on them. This means more can fit into the containers and the openings do not clog. It is not permitted to lay or place large cardboard boxes on or next to the containers. This makes it more difficult for others to access the container and obstructs the disposal companies from emptying it. You can dispose of large cardboard boxes free of charge at recycling depots (→ page 28).

Tips and advice

- Paper towels (kitchen towels, serviettes) belong in the organic waste bin.
- Dirty or coated paper and cardboard (baking paper, pizza boxes with adhesions), as well as tissues, photos, posters and wallpaper, belong in the mixed waste bins.
- Beverage cartons and soup bags belong in the yellow bin or in the yellow sack.
- Please insert unbundled paper.
- Make documents with personal data unreadable before disposal.
- Incorrectly filled bins must be disposed as mixed municipal waste. You will have to pay an additional fee for this.

This includes

- glass bottles as packaging, e.g., for beverages, oil, vinegar, sauces, perfumes
- preserve jars, e.g., for fruit, vegetables, jams or mustard

Disposal

- recycling containers for glass packaging
- emptied as required (at least every two weeks)
- waste management costs are already paid with the product (organised by Dual Systems)

Sorted by colour

Please throw different coloured glass packaging separately into the containers for:

- white glass
- brown glass
- green glass (also for other coloured glass)

Avoid mixing them up

Drinking glasses, teapots, glass bowls, vases, crystal, Christmas tree balls, lamp shades made of glass, light bulbs and small quantities of flat glass (such as window and mirror glass) do not belong in the recycling containers for glass packaging. These products interfere with recycling because of their different chemical composition. Like porcelain, ceramics and stone-

ware, they belong in the mixed waste bins. LED and energy-saving bulbs, as well as fluorescent tubes, must be collected separately and deposited at recycling depots (→ page 28) or at a mobile hazardous waste vehicle (→ page 18 f.). Window glass must be disposed of as construction waste (→ page 23).

Recycling container

The locations of the recycling containers can be found at www.dresden.de/abfall and on the themedcitymap at www.dresden.de/stadtplan/abfall. If your recycling container is overfull, please use a different site. It is not permitted to place waste on or next to the containers. Please also do not park in front of the containers and ensure free access so that the disposal vehicles can empty the containers.

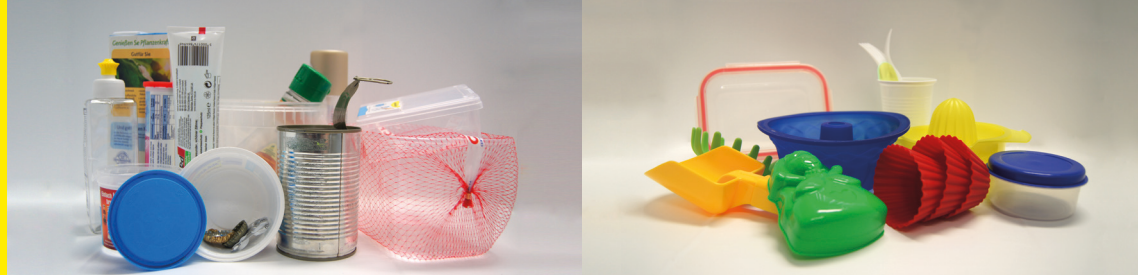
You can use the recycling containers at the following times:

- Monday to Saturday: 7 a.m.–8 p.m.
- not to be used on Sundays and public holidays

Tips and advice

- If the glass does not fit through the opening of the recycling container, dispose of it in your mixed waste bin.
- For recycling, it is very important to maintain colour purity and to avoid mixing! The disposal vehicles also have separate chambers for emptying the containers.

Light-weight packaging



Plastic waste

This includes

- empty plastic packaging: shampoo bottles, yoghurt pots, paint buckets, carry bags, plant pallets, screw lids, tubes, detergent packaging
- empty metal packaging: tins, drink cans, paint and spray cans, bottle caps, aluminium dishes, foils and lids
- empty packaging made of composite materials: beverage cartons, soup bags, coated cardboard from frozen products, vacuum packaging (coffee), blisters (such as tablet packaging)
- packaging materials (moulded parts and chips made of polystyrene, air cushions made of film)

Disposal

- yellow bin or yellow sack
- bi-weekly emptying
- waste management costs are already paid with the product (organised by Dual Systems)

Receipt of free yellow sacks

- from the citizen's advice bureau and local administrative centres (→ themed city map www.dresden.de/stadtplan/abfall)
- from the responsible waste disposal companies (→ page 24)
- from all recycling depots (→ page 28)

Incorrectly filled yellow bins and sacks

If the yellow sack or yellow bin is not filled correctly, it will not be collected/emptied (marked with a red sticker). Either the users of the yellow sack/bin sort out the waste that does not belong in it or the property owner commissions a chargeable pick-up/emptying of the incorrectly filled sacks/bins as mixed waste. You will have to pay an additional fee for this.

Tips and advice

- The yellow bin/sack is used to dispose of empty plastic, metal or composite packaging.
- You have already paid for the disposal of packaging (with or without a 'green dot') when you buy the goods.
- Household items made of plastic or metal (→ page 15) can be disposed of at the recycling depots.
- PUR expanding foam cans (with/without residual contents) and spray cans with residual contents can be delivered free of charge to recycling depots (→ page 28, except in Leuben and Loschwitz) or to the mobile hazardous waste vehicle (→ page 18 f.).
- If you have more packaging waste, you can take additional yellow sacks and place them next to the yellow bin on the day of collection. It is not possible to dispose of them at recycling depots.

This includes

- plastic kitchen utensils, plastic cutlery and dishes, sieves, food storage containers, bowls, silicone baking moulds
- plastic household items such as buckets, boxes, watering cans, flower pots, containers, water barrels, towel holders, clothes hangers, bathroom suites, baby bathtubs, laundry baskets, fruit crates, shopping boxes, folders and transparent sleeves
- furniture and furnishings made of plastic, including garden, balcony and camping furniture or cellar shelves
- plastic objects from the sports, leisure and entertainment sector such as insulating and gymnastic mats, toys, CD/DVD cases, vinyl records

Disposal

- at the recycling depots (→ page 28)
- without an extra fee
- without a quantity limit

Tips and advice

- Hand in only household items that consist exclusively of plastic. These should be unpackaged and as clean as possible.
- Empty plastic packaging, such as paint buckets, yoghurt pots, cosmetics jars or non-refundable disposable bottles belong in the yellow bin/sack.
- Put plastic waste that is combined with

metal, wood or textiles (such as ballpoint pens) and rubber objects (such as gloves) in the mixed waste bin. If the objects are too large for the residual waste bin (such as a child car seat), they must be disposed of as bulky waste (→ page 21).

- Construction polystyrene, as well as rain gutters and drain pipes made of plastic, belong in construction waste (→ page 23). Bring them to a construction waste disposal plant of your choice. Contact details can be obtained via the waste information line (03 51) 4 88 96 33.
- CDs and DVDs are made of polycarbonate and are collected separately. You can give these to the recycling depots in separate collection boxes, free of charge. By scratching the surfaces you can make your data largely unreadable. The cases of these data carriers belong in the collection containers for plastic waste.
- Pass on used goods in good condition (→ page 6).
- If you have any questions, please contact the waste information line (03 51) 4 88 96 33. The ABC of waste online at www.dresden.de/abfall will also help you to dispose of your waste correctly if you are unsure about an item.



Hazardous substances



This includes

- household cleaners, decalcifier, disinfectant, nail polish remover, spray cans with residual contents, PUR expandable foam cans
- weed and pest control agents, insect sprays, fertilisers
- liquid paints, varnishes, solvents, adhesives
- impregnating and stripping agents
- mineral oils and fuels
- waste containing mercury, such as thermometers
- disposable batteries, rechargeable batteries, car batteries
- edible oils, fats and frying oils

Disposal

- at recycling depots, except Leuben and Loschwitz (→ page 28)
- at the mobile hazardous waste vehicle (→ page 18 f.)
- disposable batteries, rechargeable batteries, car batteries, mineral oils: at the point of sale where the product was purchased
- deposit up to a maximum of 25 litres
- without an extra fee

The hazardous waste vehicle

The mobile hazardous waste vehicle takes hazardous waste, as well as fluorescent tubes, LED and energy-saving bulbs and car batteries. The disposal sites can be found on pages 18 and 19, online at www.dresden.de/schadstoffmobil,

and on the themed city map at www.dresden.de/stadtplan/abfall, map content 'mobile collection points'. You can also find the acceptance period online.

Leftover medications

You can dispose of your expired and unused medicines in the mixed waste bin. Please place these items in the bin in a way that nobody can access them. If you still have concerns about safety, you can dispose of your medicines as harmful substances. But under no circumstances do they belong in the toilet or the drain.

Tips and advice

- Hazardous substances must be collected and disposed of separately because they contain substances that are hazardous to the environment or human health. They are marked with a danger symbol.
- Do not leave your hazardous waste unattended on the roadside before the mobile hazardous waste vehicle arrives.
- If possible, hand over harmful substances directly to the collection personnel in their original containers and do not mix harmful substances together.
- Hazardous substances must not be disposed of in the mixed waste bin or toilet.



Disposable and rechargeable batteries



This includes

- disposable and rechargeable batteries for remote controls, calculators, alarm clocks, torches, wireless headphones, toys
- round cell batteries for household scales, thermometers, car keys
- lithium-ion batteries for digital cameras, laptops, tablets, mobile phones, cordless drills, game consoles, electric toothbrushes, vacuum cleaners and shavers
- car batteries

Disposal

- in shops selling disposable and rechargeable batteries
- at the recycling depots (→ page 28), no car batteries in Loschwitz
- with the hazardous waste vehicle (→ page 18 f.)
- without an extra fee

Separate disposal important

Disposable and rechargeable batteries are included in hazardous substances. They must be collected and disposed of separately because they contain substances that are hazardous to the environment and human health, such as mercury, cadmium and lead. They must not be disposed of in the residual waste bin, but must be returned to a battery collection point. They are marked with the symbol of a crossed-out waste container.

Lithium-ion batteries

Lithium-ion batteries are used in high-performance electrical appliances. You can recognise these batteries by the letters „Li“ or „Li-Ion“. As they still have so much residual energy in their discharged state which can cause short circuits and fires, they can be returned only to authorised collection points. For example, at recycling depots (→ page 28). Tape off the poles to avoid short circuits.

Car batteries

When buying a car battery, the dealer is legally obliged to charge a deposit. If you later return your car battery to the shop, you will receive the deposit back upon presentation of the receipt. Deposits will not be refunded when car batteries are handed over to recycling depots or the mobile hazardous waste vehicle. However, the delivery can be confirmed on the deposit slip or on the invoice (except at the Loschwitz recycling depot). You can submit this receipt to the retailer for a refund of the deposit.

Tips and advice

- Before you dispose of old electrical appliances, remove any disposable or rechargeable batteries they contain and dispose of them separately. Separate collection boxes are available at recycling depots for old electrical appliances with built-in rechargeable batteries.

Hazardous waste vehicle (dates under www.dresden.de/abfall)

place	site	day	time	dates
Altfranken	Otto-Harzer-Straße/Altfrankener Dorfstraße	Mo	10.00 – 10.45	see internet
Altstadt	Hans-Dankner-Straße/Bürgerwiese	Mo	16.30 – 17.30	see internet
	Marschnerstraße/Striesener Straße	Fr	18.15 – 19.00	see internet
	Reißigerstraße/Wallotstraße	Fr	17.00 – 17.45	see internet
	Sternplatz/Falkenstraße	Mo	18.00 – 19.00	see internet
Blasewitz	Altenberger Straße/Weesensteiner Straße	Mi	18.15 – 19.00	see internet
	Hüblerplatz	Fr	11.15 – 12.30	see internet
	Junghansstraße/Hepkestraße	Fr	15.15 – 16.15	see internet
	Laubestraße/Müller-Berset-Straße	Fr	14.00 – 14.45	see internet
Cossebaude	Bahnhofstraße/Ludwigstraße	Di	13.45 – 14.45	see internet
	Grenzstraße/Gartenstraße	Di	11.15 – 12.15	see internet
Cotta	Bonhoefferplatz	Do	15.45 – 16.45	see internet
	Brückenstraße	Sa	08.00 – 09.00	see internet
	Flensburger Straße/Am Urnenfeld	Di	10.00 – 10.45	see internet
	Gottfried-Keller-Platz	Do	10.00 – 11.00	see internet
	Hohendölzschener Straße/Luftbadstraße	Sa	13.00 – 14.00	see internet
	Leutewitzer Ring/Kirschenstraße (intersection)	Do	11.45 – 12.45	see internet
	Merbitzer Straße/Wolfszug	Sa	09.30 – 10.30	see internet
	Wendel-Hipler-Straße/Oskar-Mai-Straße	Mo	11.30 – 12.30	see internet
	Wilsdruffer Ring/Altgorbitzer Ring	Do	14.00 – 15.00	see internet
	Ziegeleistraße	Sa	11.15 – 12.15	see internet
Gompitz	Ockerwitz, Ockerwitzer Allee 21	Fr	15.45 – 16.30	see internet
	Ockerwitzer Allee/Altgompitz	Fr	14.30 – 15.15	see internet
	Pennrich, Altnossener Straße (construction site)	Fr	11.30 – 13.00	see internet
	Unkersdorf, Am Schreiberbach/Schwarmweg	Fr	10.00 – 11.00	see internet
Klotzsche	Keulenbergstraße/Waldteichstraße	Do	17.30 – 18.30	see internet
	Ludwig-Kossuth-Straße 61	Do	15.00 – 15.45	see internet
	Markt (Hellerau)	Sa	09.30 – 10.30	see internet
	Rostocker Straße/Boltenhagener Straße	Sa	08.00 – 09.00	see internet
	Wilschdorf, Altwilschdorf/Kirchstraße (town square)	Do	16.15 – 17.00	see internet
Langebrück	Badstraße/Schillerplatz	Mo	11.30 – 12.30	see internet
	Nicodestraße/Friedrich-Wolf-Straße	Mo	14.00 – 15.30	see internet
Leuben	Bosewitzer Straße/Bahnhofstraße	Di	10.00 – 10.45	see internet
	Försterlingstraße/Sachsenwerkstraße	Fr	10.00 – 10.45	see internet
	Laibacher Straße/Hermannstädter Straße	Mi	15.15 – 16.00	see internet
	Lilienthalstraße/Hertzstraße	Mi	13.45 – 14.45	see internet
	Seidelbaststraße/Neue Straße	Mi	11.30 – 12.15	see internet
	Steirische Straße/Salzbürger Straße	Mi	16.45 – 17.45	see internet
	Tronitzer Straße/Borsbergblick	Fr	10.00 – 11.00	see internet
Loschwitz	Altsöbigen	Mi	12.15 – 13.00	see internet
	Am Hochwald/Alojs-Andricki-Straße	Mo	12.45 – 13.45	see internet
	Auf der Höhe/Herrenbergstraße	Mi	16.00 – 17.00	see internet
	Fidelio-F.-Finke-Straße/Amtsstraße	Mi	14.30 – 15.15	see internet
	Leonardo-da-Vinci-Straße (bus loop Pillnitz)	Mi	10.00 – 11.30	see internet
	Oberwachwitzer Weg (TV tower car park)	Di	10.00 – 10.45	see internet

place	Stellplatz	day	time	dates
Loschwitz	Quohrener Straße/Rochwitzer Straße	Mi	17.30 – 18.30	see internet
	Ullersdorfer Platz („Café Heiderand“ level)	Mo	10.00 – 11.30	see internet
Mobschatz	Brabschütz, Dorfplatz-Brabschütz/Zum Schwarm	Di	17.15 – 18.30	see internet
	Elbhangstraße/Am Berg	Fr	17.15 – 18.30	see internet
Neustadt	Forststraße/Löbauer Straße	Mo	14.30 – 15.30	see internet
	Stetzscher Straße/Dr.-Friedrich-Wolf-Straße	Sa	13.00 – 13.45	see internet
Oberwartha	Fritz-Arndt-Platz (town square)	Di	15.30 – 16.30	see internet
Pieschen	Altkaditz	Sa	13.00 – 14.00	see internet
	Fürstenhainer Straße/Gleinaer Straße	Sa	11.15 – 12.15	see internet
	Kronenstraße/Reichenberger Straße	Sa	11.15 – 12.00	see internet
	Neuländer Straße (level No. 95)	Sa	08.00 – 09.00	see internet
	Rankestraße/Geibelstraße	Sa	09.30 – 10.30	see internet
	Rietzstraße/Bunsenstraße	Sa	14.15 – 15.00	see internet
Plauen	Albert-Schweitzer-Straße/Bernhardstraße	Do	17.30 – 19.00	see internet
	Altenzeller Straße/Liebigstraße	Di	17.30 – 19.00	see internet
	Altmockritz (opposite bus stop)	Mo	17.00 – 18.30	see internet
	Bienertstraße/Hohe Straße	Di	16.15 – 17.00	see internet
	Räcknitzhöhe/Rubensweg	Di	14.45 – 15.45	see internet
	Saarstraße/Am Hohen Stein	Mo	14.00 – 15.00	see internet
	Stuttgarter Straße (station Gittersee)	Mo	15.30 – 16.30	see internet
Prohlis	Boxberger Straße (school level)	Di	11.15 – 12.00	see internet
	Sosaer Straße/Bahnhofstraße	Fr	11.30 – 12.15	see internet
	Klostersteichplatz	Fr	18.00 – 19.00	see internet
	Langobardenstraße/Elsternstraße	Fr	15.15 – 16.00	see internet
	Leubnitzer Höhe/Wilmsdorfer Straße	Fr	16.45 – 17.30	see internet
	Reisstraße/Sosaer Straße	Mi	10.00 – 10.45	see internet
	Theilestraße/Am Galgenberg	Fr	13.45 – 14.45	see internet
	Uhdestraße/Feuerbachstraße	Di	13.30 – 14.15	see internet
Schönborn	Seifersdorfer Straße/Grünberger Straße	Mo	10.00 – 11.00	see internet
Schönfeld-	Borsberg, Hochlandstraße (bus loop)	Do	17.00 – 18.00	see internet
Weißig	Cunnersdorf, Gönnsdorfer Straße (near level 39)	Di	11.30 – 12.30	see internet
	Eschdorf, Pirnaer Straße/Freigut Eschdorf	Di	17.15 – 18.15	see internet
	Gönnsdorf, Zachengrundring (container site)	Mi	11.15 – 12.15	see internet
	Malschendorf, Zur Hohle/Am Spritzenberg (barn)	Do	11.15 – 12.15	see internet
	Pappritz, Straße des Friedens/Stallberg	Mi	10.00 – 10.45	see internet
	Reitzendorf, Schullwitzer Straße 3	Do	13.45 – 14.45	see internet
	Rockau, Am Dorfplatz	Do	10.00 – 10.45	see internet
	Schönfeld, Reitzendorfer Straße (castle level)	Di	14.00 – 15.00	see internet
	Schullwitz, Bühlauer Straße (container site)	Di	15.30 – 16.30	see internet
	Weißig, Bautzner Landstr. (Gasthof Weißig parking lot)	Mi	15.15 – 16.45	see internet
	Weißig, Heinrich-Lange-Straße (container site)	Mi	13.45 – 14.45	see internet
	Weißig, Pillnitzer Straße/Talstraße	Mi	17.30 – 18.30	see internet
	Zaschendorf, Dorfstraße 6/7	Do	15.15 – 16.15	see internet
Weixdorf	Am Seifzerbach/Nixenweg	Do	13.45 – 14.30	see internet
	Marsdorf, Marsdorfer Hauptstraße (container site)	Do	10.00 – 10.45	see internet
	Pastor-Roller-Straße (near youth centre)	Do	11.15 – 12.15	see internet
	Platz des Friedens (railway station)	Mo	16.30 – 18.30	see internet

Old electrical appliances



Bulky waste and waste wood

This includes

- washing machines, dishwashers, electric and gas stoves, refrigerators and freezers
- tablets, computers, printers, radios, televisions, DVD players, satellite receivers, cameras, telephones, fax machines, monitors
- electric tools, shavers, toys, toothbrushes, kitchen and household appliances, sports and medical devices, heating appliances, massage chairs, flashing shoes
- lights, LED and energy-saving bulbs, fluorescent tubes

Disposal

- at the recycling depots (→ page 28)
- collection of large household appliances free of charge, including small old electrical appliances (except LED and energy-saving bulbs, fluorescent tubes) free of charge
- free at dealers with a retail area of 400 square metres or more: devices not larger than 25 centimetres in any dimension and larger devices when purchasing a similar device
- LED and energy-saving bulbs, as well as fluorescent tubes, can also be handed over at the hazardous waste vehicle (→ page 18 f.).
- mobile phones at the HandYcap collection points (www.dresden.de/stadtplan/abfall)
- The waste information line (03 51) 4 88 96 33 provides advice on the disposal of storage heaters and photovoltaic modules.
- without an extra fee – except pick-up of large household appliances

Chargeable collection of large household appliances

You can have large devices (at least one side measuring 50 centimetres) picked up for a fee. Use the online form (→ www.dresden.de/abfall). The disposal company will inform you of the collection date in writing. The collection usually takes place within four weeks. There is a charge of 25 euros per large household appliance for transport. Alternatively, you can order an express collection within three business days at a charge of 72 euro per appliance. On the pick-up day, the device must be ready at the edge of the pavement. Collection directly from an apartment or cellar is an additional service (please specify) and increases the cost.

Tips and advice

- Waste electrical equipment must be collected separately and should not be disposed of as mixed waste (indicated by the symbol of a crossed-out waste container). Waste electrical equipment contains hazardous substances that have to be disposed of separately, as well as valuable substances that are recovered through recycling.
- Only the city and retailers are legally entitled to collect old electrical equipment for disposal. Street collections are not allowed.
- Remove easily removable disposable and rechargeable batteries and light bulbs from the units and dispose of them separately. Pay attention to lithium-ion batteries.
- Delete personal data and remove memory cards before disposal.

Bulky waste includes

- furniture such as sofas, armchairs, cupboards, shelves, tables, chairs, bed frames
- bulky household items which are too large or too heavy for the waste containers, such as mattresses, duvets, suitcases, carpets, floor coverings, mechanical sewing machines, rotary clothes dryers, prams, bicycles, toys

Waste wood includes

- wooden furniture such as tables, chairs, cupboards
- wooden household objects such as wooden boards, wooden spoons, knife blocks
- wooden play and sports equipment
- wooden pallets

Disposal

- self-disposal: without an extra fee of up to four cubic metres of bulky waste and waste wood per household per half-year at recycling depots (→ page 28), at the company Veolia Umweltservice Ost GmbH and the collection point in Schönfeld-Weißig (bulky waste only) (→ page 29)
- collection of up to four cubic metres of bulky waste per household per half-year, subject to a charge
- Adisposal of more than four cubic metres for a fee at Veolia Umweltservice Ost GmbH

Collection of bulky waste subject to charges

To have bulky waste collected from your home (up to four cubic metres per household/half-year), use the online form (www.dresden.de/sperrmuell). The collection will take place within four weeks. The disposal company will inform you in writing of the exact date and by when you must make the bulky waste available at the edge of the pavement. There is a charge of 25 euros for the transport. Alternatively, you can order an express collection within three business days at a charge of 72 euro. Collection directly from an apartment or cellar is an additional service and increases the cost. Items that cannot be loaded by two persons are excluded. The collection is free of charge once a year per household for Dresden pass holder.

Tips and advice

- Pass on used goods in good condition.
- Take out removable electrical parts and dispose of them separately (→ page 20).
- Separate bulky waste and waste wood when you deliver them yourself to the recycling depot.
- Throw loose bulky waste and waste wood into the containers (without sacks or cartons) at the recycling depot.
- Placing bulky waste next to the waste containers is not permitted. The disposal costs will be invoiced to the bin users.
- Construction timber must be disposed of as construction waste at your own expense (→ page 23).

Mixed municipal waste



This includes

- hygiene articles, nappies, cotton swabs, panty liners, tampons, wet wipes (such as cleaning, baby and spectacle wipes), cellulose tissues
- garbage, vacuum cleaner bags, cold ashes, cigarette butts
- leftover medication (→ page 16)
- small animal excrement in mineral litter (such as cat litter), dog excrement in bag
- glass products (such as drinking glasses, casserole dishes, vases), porcelain, ceramics, crystal, window and mirror glass
- disposable tableware, cutlery and razors
- wallpaper and small carpets
- dried paint and varnish residues
- cleaning rags, dirty textiles, broken shoes, leather, imitation leather
- cosmetic products
- bones, small quantities of cooking and deep-frying oils in closed containers (wrapped in absorbent paper)

Disposal

- mixed waste container (mandatory bin)
- regular emptying cycle: fortnightly
- subject to charges

Temporary excess

For a temporarily larger amount of mixed municipal waste (such as when renovating or moving house), use the prepaid waste sack printed with „Landeshauptstadt Dresden, Abfallsack, Gebühr bezahlt“.

This 120-litre waste sack is available for a fee of 8 euros from recycling depots (→ page 28), the citizens' advice bureau, the local authorities and Stadtreinigung Dresden GmbH (→ page 24). The waste sack should be placed next to the mixed waste container on the day of emptying. Other refuse sacks placed next to the bin will be charged for as inadmissible secondary storage. In case of a predictably higher demand, you might request an additional emptying, which is liable a special fee.

Tips and advice

- Only the waste that cannot be recycled and is non-hazardous should be thrown into the mixed waste bin.
- Disposable and rechargeable batteries, old electrical appliances, hazardous substances, construction waste, bulky waste, fluorescent tubes, LED and energy-saving bulbs may not be placed in the mixed waste container.
- Fill the waste container so that the lid can still be closed.
- Your mixed waste container will be emptied if it is at least 75 percent full or is provided for disposal by the property owner.
- Only prepaid mixed waste sacks may be placed next to the bin for pick-up. They can be filled with up to 25 kilograms.
- If your bin is permanently insufficient, the landlord must apply for a larger or extra container. In case of shortage of space, you might apply for a more frequent emptying.



Construction waste

This includes

- construction debris (clean): concrete, brick and natural stone, mortar, masonry, sanitation ceramics, tiles, roof tiles, plaster residues, window glass
- mixed construction site waste
- timber: windows, doors, fences, skirting boards and ceiling mouldings, ceiling panels, parquet, laminate with impact sound insulation, garden sheds and raised plant beds
- excavated soil: naturally grown or already used soil or rock material
- roading materials (tar-free)
- construction waste containing hazardous substances: products containing asbestos and tar, mineral wool

Disposal

- at a waste disposal company of your choice: addresses can be obtained from the waste information line (03 51) 4 88 96 33
- mineral construction waste up to ten litres: Leuben recycling depot (→ page 28)
- charges apply

Information for building contractors

Detailed information for building contractors can be obtained from the Emissions Protection and Waste Management department of the Environmental Agency. Go to the website

www.dresden.de, menu item City & Council, Services A-Z, Demolition and Construction Waste Disposal.

Tips and advice

- Check whether building demolition materials can be reused.
- Try to sort your construction waste as much as possible before disposal. This enables it to be better utilised and you can reduce costs.
- Note the obligation to retain the disposal documents. They must be available on request.
- Ask the waste disposers about their acceptance spectrum, the delivery quantities and the costs. These are different for each company.
- If you cannot deliver your construction waste yourself, hire a container service to transport it.
- Waste containing asbestos materials are cancer-causing. Therefore, only competent persons are permitted to dismantle and transport them.
- Only approved disposal companies may dispose of construction waste containing hazardous substances.
- Before placing a container in public space it is necessary to apply for a permit at the Street and Public Works Office.

Notes on disposal



Filling bins correctly

Collection dates

To find out when your waste containers are emptied and by which disposal company, go to www.dresden.de/abfuhrkalender and on the themed city map www.dresden.de/stadtplan/abfall. You can download the collection dates in PDF format or have them entered into your personal electronic calendar.

Mo	Di	Mi	Do	Fr	Sa	So
3	4	5	6	7	8	9
10	11	12	13	14	15	16
17	18	19	20	21	22	23
24	25	26	27	28	29	30
31						

Mo	Di	Mi	Do	Fr	Sa	So
1	2	3	4	5	6	7
8	9	10	11	12	13	14
15	16	17	18	19	20	21
22	23	24	25	26	27	28
29	30	31				

Mo	Di	Mi	Do	Fr	Sa	So
1	2	3	4	5	6	7
8	9	10	11	12	13	14
15	16	17	18	19	20	21
22	23	24	25	26	27	28
29	30	31				

Full service

To make use of the full service, the location of the container and its transport route to the disposal vehicle must comply with the requirements of the waste management statutes of the City of Dresden (→ www.dresden.de/abfall). On the day of emptying, the collection personnel will pick up the waste bins from the site on your property, take them to the disposal vehicle and return them after emptying. If you do not wish to use the full service, you can place the waste container on the edge of the pavement yourself before 6 a.m. on the day of emptying.

Emptying problems

If your waste bins are not emptied as planned, please contact the responsible disposal company directly. They can tell you the reason and, if necessary, arrange another collection date with you. Please note that on public holidays there may be delays in disposal (→ www.dresden.de/abfall or www.dresden.de/stadtplan/abfall). In case of any problem, the waste onfo line is happy to assist you: (03 51) 4 88 96 33.

Organic and mixed waste bins:

- for the most part: **Stadtreinigung Dresden GmbH**, telephone: (03 51) 4 45 51 16
- Cossebaude, Langebrück, Weixdorf, Rähnitz, Hellerau, Wilschdorf, Stetzsch, Kemnitz, parts of Klotzsche: **Veolia Umweltservice Ost GmbH**, telephone: (08 00) 497 31 20
- Gompitz, Kauscha, Mobschatz: **Becker Umweltdienste GmbH**, telephone: (03 51) 64 40 00
- Schönfeld-Weißig, parts of Kaditz and Übigau: **Nehlsen Sachsen GmbH & Co. KG**, telephone: (03 528) 43 61 10

Blue bin:

- **Stadtreinigung Dresden GmbH**, telephone: (03 51) 4 45 51 16

Yellow bin/sacks:

- **Nehlsen Sachsen GmbH & Co. KG**, telephone: (08 00) 4 45 54 55
- organised by Dual Systems

Filling bins correctly

If you do not fill your waste bins correctly, the disposal company may refuse to empty them. The bins concerned will receive a sticker notifying you of this.

- Do not compress waste into the bin. This can cause it to get wedged in the bin and stuck.
- You can re-sort incorrectly filled yellow bins/sacks. To do this, you must remove the incorrect waste items yourself. Otherwise, the owner of the property can commission the emptying of the waste as mixed waste at your expense.
- If the organic waste bin contains non-compostable materials, it must be emptied as mixed waste for an additional fee. For properties with full service, this is done automatically. Otherwise, you must provide the bin on the mixed municipal waste collection day.

No secondary deposits

It is not permitted to place waste on or next to the containers. You have to pay an additional fee for their pick-up by the disposal company. Illegally deposited bulky waste will be removed only after a fee has been charged to the owner of the property.

If you temporarily generate more waste, you can use prepaid waste sacks for mixed waste (→ page 22) and free yellow sacks for light packaging (→ page 14) and make them available on the respective day of emptying

next to the corresponding waste containers.

Bulky household objects that are too large or too heavy for the waste containers must be disposed of as bulky waste (→ page 21). Products (not packaging) that are made entirely of plastic are accepted free of charge without any quantity restrictions at the recycling depots (→ page 15).

Ensure access

If the disposal vehicle is unable to drive on a road due to incorrectly parked cars, the container cannot be emptied. Please note that on narrow streets, according to road traffic regulations, you may park your car on the side of the road only if there is a remaining driving width of at least 3.05 metres on the road. There is a general ban on stopping in curved areas – even without a stopping ban sign in place. This ensures that the view of oncoming traffic is maintained and larger vehicles can still manoeuvre. Disposal vehicles with side mirrors are 3.05 metres wide and up to twelve metres long. Fire engines and ambulances have similar vehicle dimensions and must be able to use the road.

Branches and twigs can also obstruct disposal vehicles. Trees and hedges on your property must therefore not protrude into the street. A height of 4.5 metres above the road and 2.7 metres above the footpath must be kept free.

Disposal in winter



In snowy and icy winters, it is difficult for the disposal companies to drive to the waste bins, bring them to and from the vehicles, and empty them. This can result in delays and changes to transport routes. Sometimes the bins may not be emptied as planned.

Location and transport route

- Keep your waste bins free of snow and ice.
- Clear and spread grit to make a path from your container's location to the road. Please also ensure a clear strip at the roadside, as the containers cannot be pulled over mounds of snow.
- Do not push the snow from the footpath onto the road. This narrows the width of the road and the disposal vehicles may be no longer able to drive down the road.
- The disposal vehicles are wide and heavy. Narrow roads and slopes are therefore particularly difficult to drive on in winter. However, public winter road clearance is mainly carried out only on important main roads. Most of the roads do not receive a winter service. We therefore request your understanding if your container location temporarily can't be reached.
- If your stand is located on a side street that is not accessible, ask your waste disposal company whether you can provide your waste containers on the day of emptying on a nearby main street (agreement on a fixed transfer point, clear labelling of containers).

Preparing for winter

- For emptying, it is important that the pavement, the waste container location and the waste bins are free of snow and ice. Therefore, as a resident, keep snow shovels and grit ready in time for clearing and spreading.
- Caused by bad weather conditions an emptying might not take place. If you have your mixed waste emptied only once per quarter, we ask you therefore not to place the waste bin for pick-up at the very last emptying day of a quarter.
- Wrap moist organic waste in newspaper so that it does not freeze onto the bin. Otherwise, it may not be possible to empty your organic waste bin completely.
- Obtain a supply of prepaid mixed waste sacks (→ page 22) and free yellow sacks (→ page 14). If the emptying of your waste bins is temporarily not possible, you can store the filled waste sacks in the meantime. Once waste disposal becomes possible again, you can provide the sacks for transport next to the respective waste containers on the normal emptying day.
- Store packaging glass, paper and cardboard in the cellar if it is not possible to empty the recycling containers.

You can dispose of the following free of charge

- bulky waste and waste wood up to four cubic metres (per household per half-year)
- hazardous substances up to 25 litres and PUR expandable foam cans (not accepted in Leuben and Loschwitz)
- old electrical appliances
- LED and energy-saving bulbs, fluorescent tubes
- disposable/rechargeable/car batteries (no car batteries in Loschwitz)
- household scrap (not motor vehicle scrap) made of metal such as barbecues, baking tins, watering cans, pots, tools, door locks
- plastic articles
- CDs/DVDs, video cassettes
- old textiles
- paper, cardboard, cartons
- glass packaging
- empty toner cartridges (only at recycling depots No. 1–5 → page 28)
- leaves of street trees and horse chestnuts with miner moth infestation
- beginning of January: Christmas trees (→ dates under www.dresden.de/abfall)

The following can be delivered for a fee

- green waste
- old vehicle tyres
- mineral building rubble up to ten litres only in Leuben
- fire extinguishers (not in Leuben/Loschwitz)

Recycling depots

Disposal procedures

You can dispose of waste that has accumulated in your private household at recycling depots in the City of Dresden. Please report to the reception staff at the recycling depot and complete the declaration form. You can also find it in the middle section of the Waste Guidebook and at www.dresden.de/abfall. The reception staff will enter the delivery quantity and check your details if necessary. You will then be informed into which containers you should dispose of your waste yourself.

Tips and advice

- Private individuals (not commercial companies) who dispose of waste on your behalf require a power of attorney.
- Tradespeople who are connected to the City of Dresden mixed municipal waste disposal system can dispose of waste in a manner and quantity typical of households.
- Remove easily removable disposable and rechargeable batteries and light bulbs from the units and dispose of them separately. Pay attention to lithium-ion batteries (→ page 17).
- Construction waste must be disposed of at your own expense using a disposal company of your choice (→ page 23).
- Please utilise reusable bins or bags. Otherwise, you empty the waste bags in order to dispose them at home.
- Recycling depot opening hours between Christmas and New Year: www.dresden.de/abfallinfos_jahreswechsel.

Recycling depots



1 Recycling depot Friedrichstadt

- Altonaer Straße 15
- Monday to Friday: 7 a.m.–7 p.m.
Saturday: 8 a.m.–2 p.m.
- telephone: (03 51) 4 45 51 32

2 Recycling depot Hammerweg

- Hammerweg 23
- Monday to Friday: 7 a.m.–7 p.m.
Saturday: 8 a.m.–2 p.m.
- telephone: (03 51) 4 45 51 93

3 Recycling depot Johannstadt

- Hertelstraße 3
- Monday to Friday: 12 p.m.–7 p.m.
Saturday: 8 a.m.–2 p.m.
- telephone: (03 51) 4 45 52 70

4 Recycling depot Kaditz

- Scharfenberger Straße 146
- Monday to Friday: 12 p.m.–7 p.m.
Saturday: 8 a.m.–2 p.m.
- telephone: (03 51) 4 45 51 77

5 Recycling depot Reick

- Georg-Mehrtens-Straße 1
- Monday to Friday: 7 a.m.–7 p.m.
Saturday: 8 a.m.–2 p.m.
- telephone: (03 51) 4 45 51 33

6 Recycling depot Leuben

- Bahnhofstraße 4
- Monday to Friday: 12 p.m.–7 p.m.
Saturday: 8 a.m.–2 p.m.
- telephone: (03 51) 4 97 31 20
- hazardous substances not accepted
- acceptance of up to ten litres of construction waste for a fee

7 Recycling depot Loschwitz

- Grundstraße 112
- Monday to Friday: 12 p.m.–7 p.m.
Saturday: 8 a.m.–2 p.m.
- telephone: (03 51) 4 97 31 20
- hazardous substances and car batteries not accepted

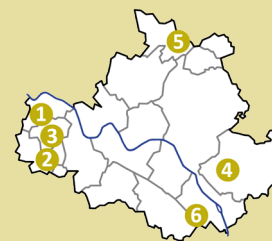
8 Recycling depot Plauen

- Pforzheimer Straße 1
- Monday to Friday: 12 p.m.–7 p.m.
Saturday: 8 a.m.–2 p.m.
- telephone: (03 51) 40 35 01 01

You can find the locations of the recycling depots on the themed city map at www.dresden.de/stadtplan/abfall.

Recycling depot opening hours between Christmas and New Year: www.dresden.de/abfallinfos_jahreswechsel.

Other collection points



Green waste collection points

- 1 Cossebaude district:
Talstraße, April–December: 2nd and 4th Saturdays of the month 8–11 a.m.
- 2 Gompitz district:
Altnossener Straße 46 a, Friday 1–2 p.m., additionally April–October: Monday 4–6.30 p.m.
- 3 Mobschatz district:
Zum Schwarm, March–November: Wednesday 3.30–6 p.m., 1st Saturdays of the month 9–11 a.m.
- 4 Schönfeld-Weißig district:
Alter Bahndamm, March–October: Monday 4–6 p.m., Wednesday 3.30–6 p.m., Saturday 8.30–11 a.m., November: Monday, 2–4 p.m., Wednesday 1.30–4 p.m., Saturday 8.30–11 a.m., December: Saturday 10 a.m.–12 p.m.
- 5 Weixdorf district:
Pastor-Roller-Straße 16 b, April–November: Wednesday 1–3 p.m., 2nd and 4th Saturdays of the month 10 a.m.–12 p.m.

Bulky waste collection points

- 4 Schönfeld-Weißig district:
Alter Bahndamm, March–October: Monday 4–6 p.m., Wednesday 3.30–6 p.m., Saturday 8.30–11 a.m., November: Monday 2–4 p.m., Wednesday 1.30–4 p.m., Saturday 8.30–11 a.m.,

December–February: Saturday
10 a.m.–12 p.m.

- 6 Veolia Umweltservice Ost GmbH:
Am Lugaer Graben 20, Monday–Friday
7 a.m.–6 p.m., Saturday 7 a.m.–2 p.m.

Waste wood collection point

- 6 Veolia Umweltservice Ost GmbH:
Am Lugaer Graben 20, Monday–Friday
7 a.m.–6 p.m., Saturday 7 a.m.–2 p.m.

Tips and advice

- There is a fee for the disposal of green waste (→ page 10).
- Up to four cubic metres of bulky waste and waste wood per household per half-year can be delivered free of charge (→ page 21). The disposal of more than four cubic metres is possible for a fee at Veolia Umweltservice Ost GmbH (Am Lugaer Graben 20).
- You can find the collection points online at www.dresden.de/stadtplan/abfall.
- Please utilise reusable bins or bags. Otherwise, you empty the waste bags in order to dispose them at home.
- Waste that is not on the list of accepted types (such as construction waste) must be delivered at your own expense to a disposal company of your choice (→ page 23).



Public street cleaning

- The city cleans about 41 per cent of the roadways and 11 per cent of the pavements. The costs incurred for this are borne by the adjacent property owner. The street cleaning calendar (www.dresden.de/strassenreinigung) tells you which streets and pavements are subject to public cleaning, on which day they are cleaned, and what the fee is.
- Do not park your vehicles at the roadside or in parking bays on the day of cleaning.
- At a road surface temperature of less than two degrees Celsius, public street cleaning will not take place. In winter, all residents are responsible for removing snow from public pavements and similar areas, and sprinkling icy areas. Further information can be found at www.dresden.de/winterdienst.

Responsibility of residents

All streets and areas not listed in the calendar are to be cleaned by the residents. In addition to the roadway, footpath and parking areas, the cycle path, the shoulder and the areas around the trunks of street-side trees must also be kept clean. The sweepings must be disposed of in the building's own mixed waste bin. Exact information on how to clean can be found in the street cleaning statutes (www.dresden.de/abfall, menu item: city cleaning, street cleaning).

Animal excrement

Animal excrement on streets and footpaths is unhygienic and defaces the city. Therefore, anyone walking an animal outside is obliged to remove deposited animal excrement immediately, according to Dresden Police Regulation § 7 (2). They must carry a suitable container for this purpose. When picking up the pile, a bag can also serve as a glove. This can then be turned inside out and knotted. The packaged excrement can then be disposed of in a public dustbin or at home in your own waste bin. If the animal excrement is not removed, this can be punished with a fine of up to 1,000 Euros.

To make it easier for pet owners to dispose of their animal excrement, the City of Dresden and some large landlords have installed several dog toilets in the city area. These are dustbins with plastic bag dispensers. However, there is no obligation to install dog toilets or dustbins in areas that pet owners like to use. There is also no funding from the dog tax earmarked for this. The animal owner must therefore be aware of his obligation to remove animal excrement before acquiring an animal.

If the animal excrement remains on the footpath, this must be removed according to the street cleaning statute, in most cases by the owner of the property. The public cleaning of footpaths takes place on about only 11 per cent of footpaths and predominantly in the city centre.

A clean city is important for everyone. It makes for a beautiful appearance, increases enjoyment of use, is more hygienic and reduces the risk of injury. In the City of Dresden, it is forbidden to throw or deposit waste in public areas according to § 2 of the Waste Management Statute. Around 3,850 municipal dustbins are available for waste produced in public and for animal excrement packed in a bag. If there is none near you, take the waste home with you and throw it into your waste bins.

However, for some years now, more and more waste has been thrown away carelessly. The city has installed more and larger dustbins, has been cleaning streets, footpaths, parks, the Elbe riverbank and recycling bank sites more frequently, and carries out additional special cleaning after major events. However, it remains clean only if everyone helps.

Picnic and barbecue leftovers

Dresden is one of the greenest cities in Europe, with 62 per cent of the city's area covered by forests and green spaces. Besides the Dresdner Heide and the Elbe riverbank, there are numerous parks. These are used especially when the weather is nice. More and more often, however, barbecues, disposable crockery, food packaging, food leftovers, pizza boxes, glass and plastic bottles, broken glass and bottle caps are left there. The polluted green areas can then no longer be freely used by others. Food remains also attract animals and vermin and are a breeding ground for germs. Animals and humans can also be injured by waste lying around. Please also bear in mind that the Elbe

riverbank is a landscape conservation area with special protection for the flora and fauna.

According to Dresden Police Regulation § 14, barbecuing in public areas is permitted only on officially licensed barbecue sites without permits, and with permits on the fire locations on the Elbe that require permits. Avoid using disposable products for picnics or barbecues and reduce packaging waste. For example, use reusable bottles, reusable crockery and cutlery and carry your food in lunch boxes and plastic containers. For unavoidable leftovers, you should bring a rubbish bag with you and dispose of it at home.

Illegal deposits

Illegal waste deposits on roadsides, at recycling bank sites or in green areas pollute the environment and obstruct and endanger citizens – especially when they contain hazardous substances. Every year, the city has to clear away around 400 tonnes of illegally deposited mixed waste, green waste and bulky waste, as well as well over 2,000 old electrical appliances. Much of this waste can be disposed of cheaply or even free of charge. Take advantage of the wide range of waste disposal options in Dresden. For example, a large proportion of the waste that does not belong in the bins at your house can be disposed of at recycling depots (→ page 28). Information on how to dispose of what can be found online at www.dresden.de/abfall and on the waste information line (03 51) 4 88 96 33.



Recycling bank sites

In Dresden, there are around 640 sites with containers for the disposal of glass jars and bottles (→ page 13). Of these, 308 also have containers for the disposal of paper and cardboard (→ page 12). The containers are emptied as required, depending on how heavily they are used. Paper and cardboard containers are emptied up to five times a week and glass containers every two weeks. In addition, all sites are cleaned at least once a week. Nevertheless, many recycling bank sites are filled with full mixed waste sacks, bulky waste and large cartons. Cardboard and glass are also often placed on or next to the containers. On the one hand, this considerably hinders access to the containers for others. On the other hand, the waste disposal companies must remove the waste stored outside the containers by hand with great effort before they can empty the containers into the disposal vehicle. Therefore, please throw your paper, cardboard and glass packaging waste properly into the containers and do not place any waste on or next to the containers. Please note that the city checks the recycling bank sites. If the perpetrator of the illegally stored waste can be identified, they must pay a fine for this administrative offence.

- Before throwing in cardboard and cartons, it is important to make them as flat or small as possible – by tearing, unfolding or standing on them. This means more can fit into the containers and the openings do not clog. You can also dispose of large cardboard boxes free of charge at recycling depots (→ page 28).

- If the glass does not fit through the opening, you can dispose of it in your mixed waste bin.
- If the container is full, use another recycling bank site. An overview of all disposal options can be found at www.dresden.de/abfall and in the themed city map at www.dresden.de/stadtplan/abfall.

Report litter

- Report illegally stored waste, contamination or overfilled recycling bank sites on <https://mitdenken.sachsen.de/DreckWeg>.
- Report overfilled recycling bank sites to the waste information line, telephone (0351) 4 88 96 33 or by e-mail to abfallberatung@dresden.de.

Cleaning actions

You can take part in different cleaning offers all over the town or on the Elbe riverbank. Furthermore you can organize your own cleaning activity all-the year. If you want so, please contact the city of Dresden via email: putzaktionen@dresden.de (where, when, how many participants, contact details). For your action you get waste bags and working gloves. Further information can be found at www.dresden.de/an-die-saecke.