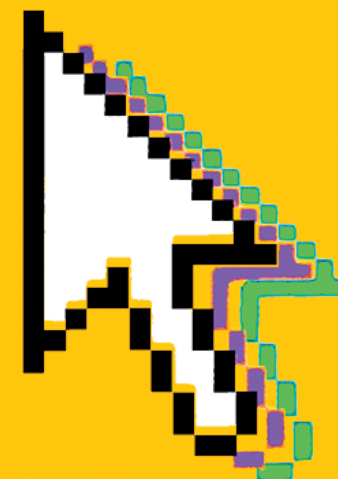


www.dresden.de/shortcuts



■ Also interesting

The website at www.dresden.de actually provides a lot more information in English, besides that mentioned explicitly in this brief overview, but it is naturally unable to match the much vaster scope of the German-language sections. No need to despair, however, as a minimum of knowledge of the German language is already sufficient to uncover a wealth of interesting and useful detail. The up-to-date city map to be found under stadtplan.dresden.de incorporates not only an address search and aerial views, but also a broad diversity of thematic information, such as the locations of cultural facilities and ATMs, or the local bus and tram route network with the corresponding stopping points. A number of information databases can also be accessed via www.dresden.de, for example

- Child day care facilities (www.dresden.de/kitas),
- Schools (www.dresden.de/schulen) or
- Calendar of events (www.dresden.de/veranstaltungen).

Legal notes and credits

Published by:
Landeshauptstadt Dresden
The Mayor

The Mayor's Office
Public Relations Dept.
Telephone (+49 351) 4 88 23 90
or (+49 351) 4 88 26 81
Telefax (+49 351) 4 88 22 38
E-Mail presse@dresden.de

Postfach 12 00 20
01001 Dresden
www.dresden.de

Central public service number 115 – We love questions

Layout:
form+grafik
Schulze, Seibt, Wiesenhütter

Printed by:
Union Druckerei Dresden GmbH

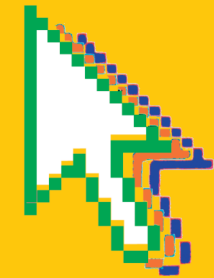
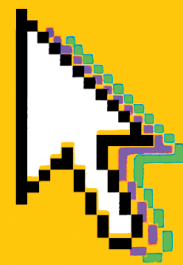
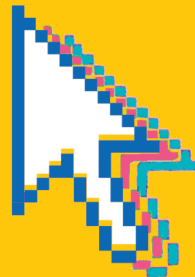
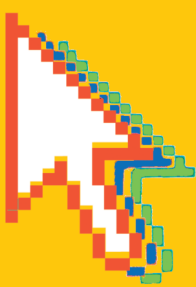
1st edition, June 2013

No acceptance of electronically signed and encrypted documents. Applications or pleadings submitted electronically, especially via e-mail, are not effective in law. This information material is a public relations project of the City of Dresden. It may not be used for purposes of election canvassing. Parties are permitted, however, to use the flyer to inform their members.

Dresden.
Dresdener



www.dresden.de
Your instant answers



■ www.dresden.de/business

Dresden is Europe's number one microelectronics location and the city with the highest research density in Germany. It is also home to the only "University of Excellence" in Eastern Germany. There is thus plenty to discover on these pages. You will find not only facts and figures on Dresden as a business and science location. The city holds also many interesting offers for new investors, resident companies and business founders.

■ www.dresden.de/children

Combining career and family – where can I find advice and assistance? These pages point you to all the necessary information on child day care in Dresden. The city offers an extensive network of the most varied facilities, from nurseries to after-school day centres.

■ www.dresden.de/christmas

The Dresden Striezelmarkt is the oldest Christmas market in Germany. And it is also the origin of the typical Dresden Christstollen cake. Photos and a video give an impression of the joyful bustle on the Altmarkt square. The market is a magnet for thousands of visitors each year in Advent. These pages provide information on dates, opening times, programme, market layout, directions and parking. Highlights such as the Stollen Festival are also introduced, alongside the history of the market and its traditional craft arts.

■ www.dresden.de/city

This section of the website offers English-speaking visitors information on a selection of the public services offered by the City Administration – for example use of the city archives, child day care facilities, residence permits or business support services. Each

keyword is accompanied by details of the responsible office, the contact persons and office hours. A complete listing of public services and responsibilities can be found at the German-language website.

■ www.dresden.de/culture

Dresden is a city of cultural treasures. These pages provide a first overview of the countless museums, with their exhibitions, highlights and opening times. This is also the place to find information on art, music, theatre and literature.

■ www.dresden.de/europe

Dresden maintains relationships with thirteen twin cities, not only in Europe, but also in the USA, Asia and Africa. Associations and institutions enrich these partnerships with their individual contact. At the same time, the City of Dresden contributes actively to diverse European networks and projects, where it cooperates with other local authorities. Further details can be found here. To receive regular information on the latest projects and events with an international perspective, you can subscribe to our special newsletter "Dresden International".

■ www.dresden.de/history

Would you care to join us on a tour through the more than 800-year history of Dresden? That is possible here. Set out from the first signs of settlement, via the splendid era of August the Strong and the painful destruction of February 1945, through to the present day. Information is also provided on Dresden inventions and on the city's industrial and cultural past. All those interested in delving deeper into local history will appreciate an overview of societies and institutions devoted in one way or another to the history of Dresden.

■ www.dresden.de/sports

If you enjoy swimming, click through to Dresden's indoor and open-air swimming baths. Brief texts also provide information on cycling, inline skating and ice skating in the city.

■ www.dresden.de/statistics

Where exactly is Dresden located? How many people live here? How green is the city? Answers to these and many other questions can be found among our statistics. You will also find information on how to experience Dresden on a 3D virtual city tour.

■ www.dresden.de/tourism

This is the perfect Web address for all those who would like to discover Dresden's most beautiful spots. You will find photos and information on both the old city, with its legendary sights such as the Semper Opera House, Frauenkirche, Zwinger and Brühl Terrace, and the colourful Neustadt district on the opposite side of the Elbe. Take a virtual tour of the unique Elbe landscape in and around Dresden, with tips on the best viewpoints and special events. On most pages, a section of the city map helps you to find your bearings.

■ www.dresden.de/traffic

Dresden's city centre is best explored on foot. But the city also possesses a very efficient local transport network. Whether by tram, bus, Elbe ferry or even cable car, practically any point in the city can be reached quickly and simply by public transport. Alongside short descriptions, you will here find links to further information provided by the Dresden Transport Corporation (DVB), the Upper Elbe Transport Network (VVO) and the German Railways (DB).